



2020-2021

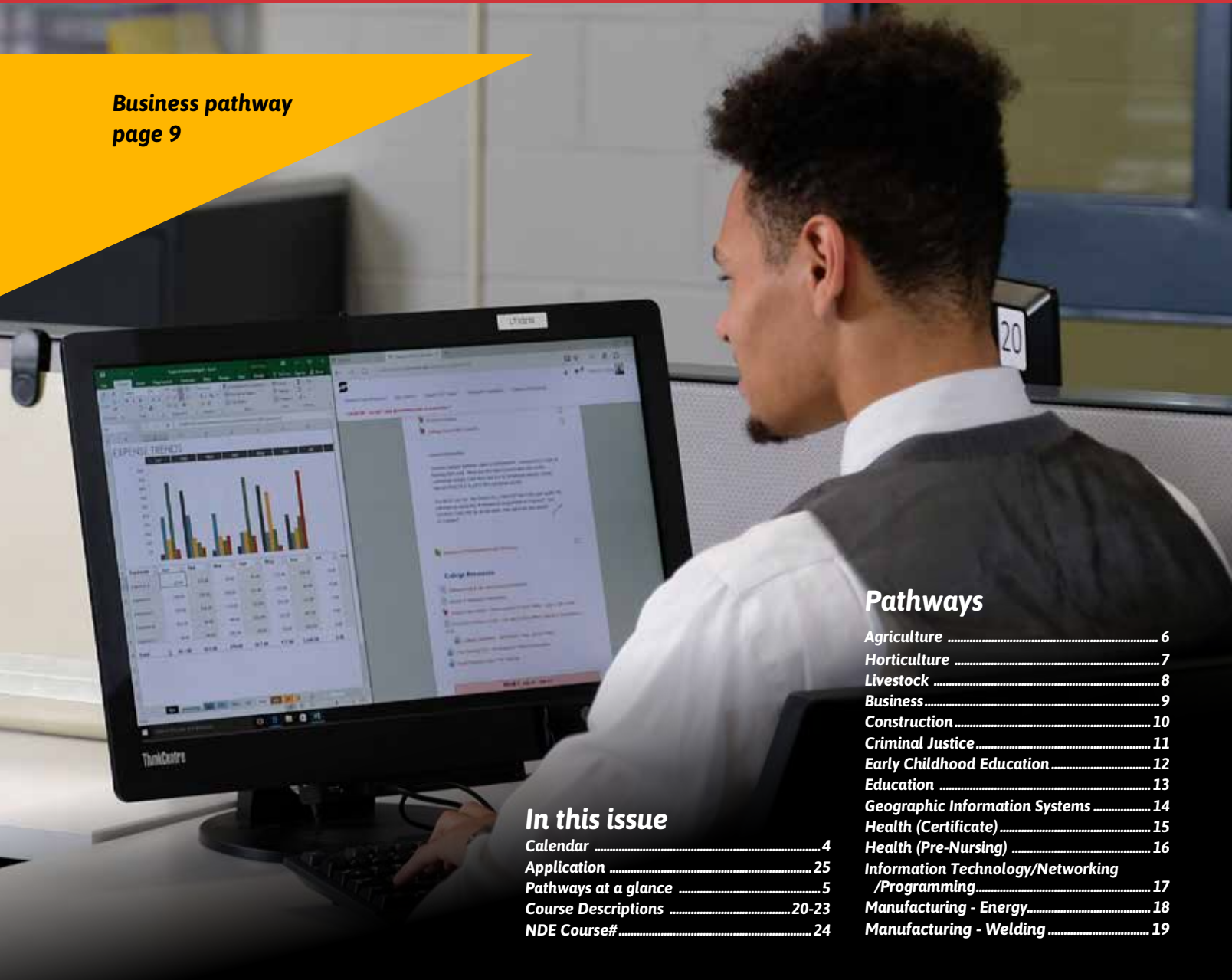


Career Pathway

STUDENT INFORMATION GUIDE

FOR HIGH SCHOOL STUDENTS IN SCC'S 15-COUNTY SERVICE AREA

Business pathway
page 9



Pathways

Agriculture	6
Horticulture	7
Livestock	8
Business	9
Construction	10
Criminal Justice	11
Early Childhood Education	12
Education	13
Geographic Information Systems	14
Health (Certificate)	15
Health (Pre-Nursing)	16
Information Technology/Networking /Programming	17
Manufacturing - Energy	18
Manufacturing - Welding	19

In this issue

Calendar	4
Application	25
Pathways at a glance	5
Course Descriptions	20-23
NDE Course#	24



@SENeCAP



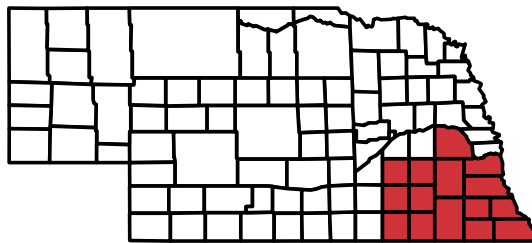
www.youtube.com/user/SECommunityCollege



www.facebook.com/SENeCAP

WHAT is SENCAP?

Southeast Nebraska Career Academy Partnership is the Career Academy Pathway opportunity for high school juniors and seniors in Southeast Community College's 15-county service area. Classes are dual-credit, earning both high school and college credit at the same time.



(Students in the Lincoln Public School district must attend The Career Academy at SCC's Lincoln Campus, 8800 O St., Lincoln, NE 68520 - <http://wp.lps.org/tca/>)

*Since SENCAP's inception in 2008, the program has grown from 16 participating high schools, approximately 45 students and two career pathways (Education and Health), to **47 high schools and more than 1,000 students involved in 13 career pathways.** Students have **more than 60 college courses** in which to choose.*

**Not all academies are offered at all participating high schools. Check with your high school counselor to see which academies are offered in your area. Many courses also are offered online for your convenience.*

WHY SHOULD I TAKE DUAL CREDIT ACADEMY CLASSES?

You will have the opportunity to explore the career field which interests you BEFORE you start college. A career isn't only about earning a paycheck, it's about finding a job you are passionate about and love to do!

In the career pathways, you will get an introduction to a career field that interests you and a first-hand look at what goes on in the workplace by taking field trips, participating in job shadowing, listening to speakers, conducting research on careers of interest, and experiencing other career exploration activities.

SENCAP Career Academies are geared to prepare you for high-wage, high-skill and high-growth occupational areas. Academies combine rigorous classes with relevant experiences, helping students become ready for a career.

WHAT ACADEMY PATHWAYS* ARE OFFERED?

- Agriculture
- Business
- Construction
- Criminal Justice
- Early Childhood Education
- Education
- Geographic Information Systems
- Health Certificate & Hlth. Pre-Nursing Pathways
- Horticulture
- Information Technology/Networking/Programming
- Livestock
- Manufacturing - Energy
- Manufacturing - Welding

WHEN AND WHERE WILL I TAKE CLASSES?

SENCAP classes will be offered and scheduled during the regular school day. **Options include:**

- Face-to-face at your school
- Hybrid (online lecture, face-to-face lab)
- Online via the Internet
- Live broadcast from SCC location (Zoom or Lifesize video conferencing)

WILL THESE CLASSES TRANSFER?

All of the courses through SENCAP will count toward credit at Southeast Community College. Many will transfer to other four-year institutions in Nebraska. It is the student's responsibility to check with the institution where credit is being transferred to ensure SCC's courses will meet that school's degree requirements. Contact an advisor from the institution to which you plan to transfer as soon as possible. Visit us at www.southeast.edu/transfer-information for more information.

HOW DO I ENROLL?

You must:

- be in good academic standing
- receive permission from your high school
- have transportation to and from classes and the work-based learning experiences
- complete the SENCAP/DC Advantage application form, registration form and course prerequisites

Students will take at least one academy class in the area of their career interest each semester. Each high school will have a complete listing of classes and course descriptions, or you can view the class listings at www.southeast.edu/SENCAP

AFTER YOU ARE ACCEPTED...

After you are enrolled in SENCAP/DC Advantage, you will receive a letter from SENCAP with information on your class schedule, student ID, important dates, accessing the Hub and CANVAS, and completing SCC's online New Student Orientation.

STUDENT EXPECTATIONS AND OUTCOMES

We expect you to earn your high school diploma, HAVE FUN exploring your career pathway, and complete your online **student portfolio** assignments.

BENEFITS INCLUDE:

- earning college credits while still in high-school
- scholarship for half the cost of tuition/fees
- learning key skills in the career pathway
- learning career-readiness skills.
- being ready for immediate employment with the enhanced skills you've developed.
- earning a recognized certification or be well on the way to completing one
- being eligible for entry into a community college training or degree program.



WHAT IS THE STUDENT PORTFOLIO?

In addition to the college pathway courses, you must complete an online student portfolio to receive credit for the high school portion of the academy. You will access SCC's online CANVAS course to complete weekly assignments. The assignments will provide you an opportunity to explore a variety of careers in your pathway. **Typical portfolio assignments include:**

CAREER SEARCH

You will research career interests, identify job growth, salary, education requirements, and consider what foundational/soft skills are necessary to be successful in the career.

FIELD TRIP REFLECTIONS

Your coordinator will take a minimum of two field trips a year. Field trips are career oriented and usually involve going to a worksite. Instructors are encouraged to suggest field trip companies/sites to their SENCAP coordinator, helping make the connection from class to academy to career.

JOB SHADOWS/CLASSROOM OBSERVATIONS

You are required to complete a minimum of two job shadows a year. Students in the Education academy are strongly encouraged to complete weekly classroom observations and keep classroom observation forms up to date.

RÉSUMÉ & COVER LETTER BUILDING, REFERENCES

You will create a traditional résumé and obtain personal references. Second-year SENCAP students will transform their résumés into conversational résumés, obtain references and letters of recommendation.

SCHOLARSHIPS

You will research local and national scholarships.

GALLUP STRENGTHFINDERS®

You will complete the Gallup StrengthFinders® assessment and learn how your strengths will be an asset in the career field of choice.

SOCIAL MEDIA

You will gain an understanding of how social media can work to your professional benefit and how long-lasting a digital footprint can be: Twitter, Blogging, Linked-in, etc.

SPECIAL EVENTS

You will have the opportunity to attend Special Event days hosted by SENCAP. They include professional and student panels and multiple breakout sessions covering: Gallup StrengthFinders, Social Media and Networking, Online Job Searches, Résumé Building, and Site Visits.

DUAL-CREDIT SCHOLARSHIP INFORMATION

SCC offers a tuition remission scholarship for all dual-credit SENCAP classes .

The "Dual-Credit Scholarship" is only available for:

- a. Students who are in SCC's 15-county service area and/or are associated with a high school in the SCC 15-county service area
- b. Students who are enrolled in DC Advantage, SENCAP or TCA Career Pathways

The "Dual-Credit Scholarship" covers:

- a. 50% tuition waiver
- b. 50% fee waiver

(The remaining half will be paid for by either the student or the K-12 school depending on available funding.)

Some courses for Health, Construction and Energy may have additional fees, not covered in the scholarship, which will pay for additional tools, course materials, state testing, and background checks.

The purchasing of textbooks is the responsibility of the student. Textbooks may be purchased at <http://sccbookstore.com>

All SENCAP or DC advantage high school program classes are dual-credit, and taught by dual-credit certified instructors.



AUGUST 2020						
Su	Mo	Tu	We	Th	Fr	Sa
						1
2	3	4	5	6	7	8
9	10	11	12	13	14	15
16	17	18	19	20	21	22
23	24	25	26	27	28	29
30	31					

SEPTEMBER 2020						
Su	Mo	Tu	We	Th	Fr	Sa
		1	2	3	4	5
6	7	8	9	10	11	12
13	14	15	16	17	18	19
20	21	22	23	24	25	26
27	28	29	30			

OCTOBER 2020						
Su	Mo	Tu	We	Th	Fr	Sa
				1	2	3
4	5	6	7	8	9	10
11	12	13	14	15	16	17
18	19	20	21	22	23	24
25	26	27	28	29	30	31

NOVEMBER 2020						
Su	Mo	Tu	We	Th	Fr	Sa
1	2	3	4	5	6	7
8	9	10	11	12	13	14
15	16	17	18	19	20	21
22	23	24	25	26	27	28
29	30					

DECEMBER 2020						
Su	Mo	Tu	We	Th	Fr	Sa
		1	2	3	4	5
6	7	8	9	10	11	12
13	14	15	16	17	18	19
20	21	22	23	24	25	26
27	28	29	30	31		

JANUARY 2021						
Su	Mo	Tu	We	Th	Fr	Sa
					1	2
3	4	5	6	7	8	9
10	11	12	13	14	15	16
17	18	19	20	21	22	23
24	25	26	27	28	29	30
31						

FEBRUARY 2021						
Su	Mo	Tu	We	Th	Fr	Sa
		1	2	3	4	5
6	7	8	9	10	11	12
13	14	15	16	17	18	19
20	21	22	23	24	25	26
27	28					

MARCH 2021						
Su	Mo	Tu	We	Th	Fr	Sa
		1	2	3	4	5
6	7	8	9	10	11	12
13	14	15	16	17	18	19
20	21	22	23	24	25	26
27	28	29	30	31		

APRIL 2021						
Su	Mo	Tu	We	Th	Fr	Sa
				1	2	3
4	5	6	7	8	9	10
11	12	13	14	15	16	17
18	19	20	21	22	23	24
25	26	27	28	29	30	

MAY 2021						
Su	Mo	Tu	We	Th	Fr	Sa
						1
2	3	4	5	6	7	8
9	10	11	12	13	14	15
16	17	18	19	20	21	22
23	24	25	26	27	28	29
30	31					

Fall Semester 2020 Aug. 24 - Dec. 17, 2020

- Registration begins.....March 30
- Last day to add your name to a waitlist/
Final Waitlist registration notices emailed..... Aug 24
- First 5-week classes begin..... Aug 24
- Waitlists are closed Aug 25
- Last day to register online Aug 25
- Instructor signature required for adds..... Aug 26
- Last day to add classes Aug 28

Spring Semester 2021 Jan. 11 - May 6, 2021

Dates have not been set at the time of printing.
Please visit www.southeast.edu/calendar for the most current information.

SYMBOL KEY:

- = Semester Begin/End
- = Holiday (College Closed. No services.)
- = Non-Contract Day (College Closed. No services.)
- = Faculty In-Service Day

SENCAP CAREER ACADEMY PATHWAY COURSES AT A GLANCE

	YEAR 1 - 11th grade		YEAR 2 - 12th grade	
	Junior (or Senior if pathway is not full)		Returning SENCAP Senior	
	First semester	Second semester	First semester	Second semester
AGRICULTURE	AGRI 1123 ^ Ag Occupation Exploration 3 credits	AGRI 1131 ^ Crop & Food Science 3 credits	AGRI 1126 ^ Intro To Livestock Production or AGRI1211 Fundamentals of Ag Marketing (only at SCC Hort.-appr. h.s.) 3 credits	AGRI 1171 ^ Ag Technology 2 credits
HORTICULTURE	HORT1130 ^ Introduction to Horticulture 3 credits	HORT1216 ^ Horticulture Business Mgmt. 3 credits	HORT1136 Plant Propagation 2 credits	HORT1154 Greenhouse Management (only at SCC Hort.-appr. h.s.) 2 credits
LIVESTOCK	AGRI 1126 ^ Intro to Livestock Production and AGRI 1123 Ag Occupation Exploration 6 credits	AGRI 1131 ^ Crop & Food Science 3 credits	AGRI 1177 ^ Companion Animals 3 credits	AGRI 1257 Live Animal Selection & Carcass Evaluation 2 credits
BUSINESS	BSAD 1050 ^ Introduction to Business and ECON 1200 ^ Personal Finance 6 credits	ENTR 1050 ^ Introduction to Entrepreneurship 3 credits	BSAD 2540 ^ Principles of Management and ACCT 1200 ^ Principles of Accounting I 6 credits	BSAD 2520 ^ Principles of Marketing 3 credits
CONSTRUCTION	CNST 1226 Const. Tools & Materials I AND CNST 1228 Const. Processes & Practices I 3 credits	CNST 1227 Const. Tools & Materials II AND CNST 1229 Const. Processes & Practices II 3 credits	CNST 1123 Concrete & Masonry Tools & Materials I AND CNST 1125 Concrete & Masonry Apps. I 3 credits	CNST 1124 Concrete & Masonry Tools & Materials II AND CNST 1126 Concrete & Masonry Apps. II 3 credits
CRIMINAL JUSTICE	CRIM 1010 ^ Introduction to Criminal Justice 3 credits	CRIM 2030 ^ Police & Society 3 credits	CRIM 2100 ^ Juvenile Justice 3 credits	CRIM 1030 ^ Courts and the Judicial Process 3 credits
EARLY CHILDHOOD EDUCATION	ECED 1150 ^ Intro to Early Childhood Education 3 credits	ECED 1120 ^ Preschool Child Development 2 credits	ECED 1260 ^ Early Childhood Health, Safety and Nutrition 3 credits	ECED 1130 ^ Social-Emotional Dev. & Behav. Guide. 3 credits
EDUCATION	EDUC 1110 ^ Introduction to Professional Education 3 credits	EDUC 2590 ^ Instructional Technology 3 credits	PSYC 1250 ^ Interpersonal Relations 3 credits	EDUC 2300 ^ Introduction to Special Education 3 credits
GEOGRAPHIC INFORMATION SYSTEMS	GIST 1110 ^ Intro. to Geospatial Technology 3 credits	GIST 1120 ^ Spatial Analysis and Modeling 3 credits	GIST 1130 ^ Data Acquisition & Management 3 credits	GIST 1140 ^ GIS Capstone 3 credits
HEALTH CERTIFICATE PATHWAY	HLTH 1150 Nursing Assistant or HLTH 1050 ^ Dental Terminology 3-4 credits	HLTH 1350 Nutrition Aide or HLTH 1450 Physical Therapy Aide 2-3.5 credits	HLTH 1040 Medication Aide or MEDT 1100 Procedures in Phlebotomy 2-2.5 credits	HLTH 1080 EKG Tech or HLTH 1090 Personal Care Aide OR HLTH 1250 Sterile Processing 3.5-6 credits
HEALTH PRE-NURSING PATHWAY	HLTH 1150 Nursing Assistant 4 credits	SOCI 1010 ^ Introduction to Sociology 3 credits	PSYC 2960 ^ Life-span Human Development 3 credits	FSDT 1350 ^ Basic Nutrition or HLTH 1060 ^ Comp. Med. Term. or MEDA 1101 ^ Basic Medical Terminology 1.5-3 credits
INFORMATION TECH./ NETWORKING/ PROGRAMMING	INFO1151 ^ Information Technology Fundamentals 3 credits	INFO1171 ^ PC Operating Systems 3 credits	INFO1281 ^ Networking Concepts 2 credits	INFO1214 ^ Programming Concepts 2 credits
MANUFACTURING-ENERGY	ENER 1100* ^ Energy Industry Fundamentals 3 credits	ENER 2102 ^ Nuclear Energy 2 credits	ENER 2130 ^ Green Energy Technologies 2 credits	ENER 1110 ^ Operator Safety 3 credits
MANUFACTURING-WELDING	WELD 1105 Oxyacetylene Welding & Cutting 3.5 credits	WELD 1101 SMAW I 3.5 credits	WELD 1122 GMAW Theory - 2 and WELD 1210 GMAW Lab I - 2.5 4.5 credits	WELD 2310 FCAW 2 credits

^ = Course offered online

AGRICULTURE PATHWAY



	YEAR 1 - 11TH GRADE		YEAR 2 - 12TH GRADE		credits
	FIRST SEMESTER	SECOND SEMESTER	FIRST SEMESTER	SECOND SEMESTER	
CAREER PATHWAY	AGRI 1123 ^ Ag Occupation Exploration 3 credits	AGRI 1131 ^ Crop & Food Science 3 credits	AGRI 1126 ^ Intro To Livestock Production - 3 or AGRI 1211 Fundamentals of Ag Marketing** - 3 3 credits	AGRI 1171^ Ag Technology 2 credits	11
Suggested DC Advantage General Education Learning Outcomes (*GELOs) to meet program requirements	SOCI 1020 ^ Diversity in Society (GELO #3) 3 credits	MATH 1150 ^ College Algebra (GELO #5) 3 credits	ENGL 1010 ^ English Composition I (GELO #2) ECON 1200 ^ Personal Finance (GELO #6) 3-6 credits	SPCH 1110 ^ Public Speaking (GELO #1) 3 credits	15

Scholarship savings: 26 credit hours × \$111.00 = \$2,886 ÷ 2 = **\$1,443**

26 of 73
credits earned toward degree

Associate of Applied Science Degree — Agribusiness Management

To complete this degree at SCC:	AGRI 1124 - 3 AGRI 1205 - 3 AGRI 1211 - 3 AGRI 1216 - 3 12 credits	AGRI 2202 - 4 AGRI 2204 - 1 AGRI 2267 - 3 AGRI 2291 - 3 AGRI 2901 - 5 AGRI Electives 16 credits	plus 19 credits	47
--	--	---	-----------------	-----------

****Course can only be taught at high school that has been approved by SCC Agriculture Management & Production program.**

- Possible career fields:** Ag Aviation Ground Crew, Crop Consultant, Farm Assistant, Ranch Assistant
- SCC graduate salary:** Recent graduates report \$33,000 per year (SCC 2018 Graduate Employment Report).
- For more information:** Amanda Fairley, 402-228-3468 ext.1205, afairley@southeast.edu or Academic Transfer Advisor: academictransfer@southeast.edu



GENERAL EDUCATION LEARNING OUTCOMES (GELOs)

* Every degree program requires students to build a foundation of GELOs aimed to develop knowledge and skills beyond those specific to an occupation for academic, personal and social growth. Students should contact a program advisor to assist with the selection of GELO courses which will meet their program's graduation requirements.

- GELO #1: Oral Communication
- GELO #2: Written Communication
- GELO #3: Critical Thinking & Problem Solving
- GELO #4: Global Awareness and Citizenship
- GELO #5: Analytical, Quantitative, and Scientific Reasoning
- GELO #6: Career and Life Skills

^ = Course is offered online.

Please note: not all classes are available every term. Students much check availability in the credit class schedule. www.southeast.edu/classchedules

www.southeast.edu/highschoolstudentprograms

HORTICULTURE PATHWAY



		YEAR 1 - 11TH GRADE		YEAR 2 - 12TH GRADE		credits
		FIRST SEMESTER	SECOND SEMESTER	FIRST SEMESTER	SECOND SEMESTER	
CAREER PATHWAY		HORT1130 ^ Introduction to Horticulture 3 credits	HORT1216 ^ Horticulture Business Management 3 credits	HORT1136 Plant Propagation 2 credits	HORT1154 Greenhouse Management** 2 credits	10
Suggested DC Advantage General Education Learning Outcomes (*GELOs) to meet program requirements		PSYC 1810 ^ Introduction to Psychology (GELO #3) 3 credits	MATH 1150 ^ College Algebra (GELO #5) 3 credits	ENGL 1010 ^ English Composition I (GELO #2) and ECON 1200 ^ Personal Finance (GELO #6) 3-6 credits	SPCH 1110 ^ Public Speaking (GELO #1) 3 credits	15
						25 of 68 credits earned toward degree

Scholarship savings: 25 credit hours × \$111.00 = \$2,775 ÷ 2 = **\$1,387.50**

Associate of Applied Science Degree — Horticulture and Turfgrass Management						
To complete this degree at SCC:	Courses depend on focus area					43

****Course can only be taught at high school that has been approved by SCC Horticulture & Turfgrass Management Program**

Possible career fields: Golf course assistant, golf course spray tech, golf course irrigation tech, sports field manager, landscape construction, landscape installation, landscape maintenance, landscape sales, florist, greenhouse grower, groundskeeper, equipment salesperson, research technician, commercial pesticide applicator, conservationist

SCC graduate salary: Recent graduates report \$16.05 per hour (SCC 2018 Graduate Employment Report).

Other important info: To graduate from the program, students will be required to complete an internship.

For more information: Alex Goeckel, agoeckel@southeast.edu, 402-228-8126 or Academic Transfer Advisor: academictransfer@southeast.edu



GENERAL EDUCATION LEARNING OUTCOMES (GELOs)	
* Every degree program requires students to build a foundation of GELOs aimed to develop knowledge and skills beyond those specific to an occupation for academic, personal and social growth. Students should contact a program advisor to assist with the selection of GELO courses which will meet their program's graduation requirements.	GELO #1: Oral Communication GELO #2: Written Communication GELO #3: Critical Thinking & Problem Solving GELO #4: Global Awareness and Citizenship GELO #5: Analytical, Quantitative, and Scientific Reasoning GELO #6: Career and Life Skills

^ = Course is offered online.
 Please note: not all classes are available every term. Students much check availability in the credit class schedule. www.southeast.edu/classchedules

www.southeast.edu/highschoolstudentprograms

LIVESTOCK PATHWAY



	YEAR 1 - 11TH GRADE		YEAR 2 - 12TH GRADE		credits
	FIRST SEMESTER	SECOND SEMESTER	FIRST SEMESTER	SECOND SEMESTER	
CAREER PATHWAY	AGRI 1126 ^ Intro to Livestock Production and AGRI 1123 ^ Ag Occupations Exploration 6 credits	AGRI 1131 ^ Crop & Food Science 3 credits	AGRI 1177 ^ Companion Animals 3 credits	AGRI 1257 Live Animal Selection & Carcass Evaluation 2 credits	14
Suggested DC Advantage General Education Learning Outcomes (~GELOs) to meet program requirements	SOCI 1020 ^ Diversity in Society (GELO #3) 3 credits	MATH 1150 ^ College Algebra (GELO #5) 3 credits	ENGL 1010 ^ English Composition I (GELO #2) and ECON 1200 ^ Personal Finance (GELO #6) 3-6 credits	SPCH 1110 ^ Public Speaking (GELO #1) 3 credits	15

Scholarship savings: 29 credit hours × \$111.00 = \$3,219 ÷ 2 = **\$1,609.50**

29 of 73 credits earned toward degree

Associate of Applied Science Degree — Livestock Management and Production

	AGRI 1141 - 4 AGRI 1171 - 2 AGRI 1205 - 3 AGRI 1221 - 2 AGRI 1257 - 2 AGRI 2231 - 4 17 credits	AGRI 2223 - 4 AGRI 2240 - 4 AGRI 2245 - 4 AGRI 2254 - 3 AGRI 2255 - 3 18 credits	AGRI Electives - 9 9 credits		44
To complete this degree at SCC:					

Possible career fields: Breeding Tech, Cattle Foreman, Herdsman, Ranch Assistant
SCC graduate salary: Recent graduates report \$28,000 per year (SCC 2018 Graduate Employment Report).
For more information: Alex Goeckel, agoeckel@southeast.edu, 402-228-8126 or Academic Transfer Advisor: academictransfer@southeast.edu



GENERAL EDUCATION LEARNING OUTCOMES (GELOs)

* Every degree program requires students to build a foundation of GELOs aimed to develop knowledge and skills beyond those specific to an occupation for academic, personal and social growth. Students should contact a program advisor to assist with the selection of GELO courses which will meet their program's graduation requirements.

- GELO #1: Oral Communication
- GELO #2: Written Communication
- GELO #3: Critical Thinking & Problem Solving
- GELO #4: Global Awareness and Citizenship
- GELO #5: Analytical, Quantitative, and Scientific Reasoning
- GELO #6: Career and Life Skills

^ = Course is offered online.
 Please note: not all classes are available every term. Students much check availability in the credit class schedule. www.southeast.edu/classchedules

BUSINESS PATHWAY



		YEAR 1 - 11TH GRADE		YEAR 2 - 12TH GRADE		credits
		FIRST SEMESTER	SECOND SEMESTER	FIRST SEMESTER	SECOND SEMESTER	
CAREER PATHWAY		BSAD 1050 ^ Introduction to Business and ECON 1200 ^ Personal Finance 6 credits	ENTR 1050 ^ Introduction to Entrepreneurship 3 credits	BSAD 2540 ^ Principles of Management and ACCT 1200 ^ Principles of Accounting I 6 credits	BSAD 2520 ^ Principles of Marketing 3 credits	18
Suggested DC Advantage General Education Learning Outcomes (*GELOs) to meet program requirements			SPCH 1110 ^ Public Speaking (GELO #1) 3 credits	ENGL 1010 ^ English Composition I (GELO #2) 3 credits	BSAD 2170 ^ Applied Statistics (GELO #5) 3 credits	9

Scholarship savings: 27 credit hours × \$111.00 = \$2,997 ÷ 2 = **\$1,498.50**

27 of 60
credits earned toward degree

Associate of Applied Science Degree – Business Administration					
To complete this degree at SCC:		BSAD1010 - 3 BSAD1090 - 3 BSAD2155 - 3 BSAD2310 - 3 BSAD elective - 3 15 credits	BSAD1020 - 3 ECON2110 - 3 OFFT2120 - 3 9 credits	BSAD elective - 3 BSAD elective - 3 BSAD elective - 3 9 credits	33

*If you intend to enroll in a business program in college, we recommend taking these while in high school. They are required for a college degree.

Possible career fields: Account Manager, Benefit Specialist, Business Manager, Customer Service Representative, Marketing Assistant

SCC graduate salary: Recent graduates report \$34,000 per year (SCC 2018 Graduate Employment Report).

For more information: Beth Deinert, bdeinert@southeast.edu, 402-437-2415
 Linda Hartman, lhartman@southeast.edu, 402-437-2433;
 Tammie Lang, tlang@southeast.edu, 402-761-8465



GENERAL EDUCATION LEARNING OUTCOMES (GELOs)

* Every degree program requires students to build a foundation of GELOs aimed to develop knowledge and skills beyond those specific to an occupation for academic, personal and social growth. Students should contact a program advisor to assist with the selection of GELO courses which will meet their program's graduation requirements.

- GELO #1: Oral Communication
- GELO #2: Written Communication
- GELO #3: Critical Thinking & Problem Solving
- GELO #4: Global Awareness and Citizenship
- GELO #5: Analytical, Quantitative, and Scientific Reasoning
- GELO #6: Career and Life Skills

^ = Course is offered online.

Please note: not all classes are available every term. Students must check availability in the credit class schedule. www.southeast.edu/classchedules

www.southeast.edu/highschoolstudentprograms

CONSTRUCTION PATHWAY



	YEAR 1 - 11TH GRADE		YEAR 2 - 12TH GRADE		credits
	FIRST SEMESTER	SECOND SEMESTER	FIRST SEMESTER	SECOND SEMESTER	
CAREER PATHWAY	CNST 1226 Const. Tools & Materials I AND CNST 1228 Const. Processes & Practices I 3 credits	CNST 1227 Const. Tools & Materials II AND CNST 1229 Const. Processes & Practices II 3 credits	CNST 1123 Concrete & Masonry Tools & Materials I AND CNST 1125 Concrete & Masonry Applications I 3 credits	CNST 1124 Concrete & Masonry Tools & Materials II AND CNST 1126 Concrete & Masonry Applications II 3 credits	12
Suggested DC Advantage General Education Learning Outcomes (* GELOs) to meet program requirements	MATH 1150 ^ College Algebra (GELO #5) 3 credits	ECON 1200 ^ Personal Finance (GELO #3) 3 credits	ENGL 1010 ^ English Composition I (GELO #2) 3 credits	SPCH1110 ^ Public Speaking (GELO #1) 3 credits	12

Scholarship savings: 24 credit hours × \$111.00 = \$2,664 ÷ 2 = **\$1,332.**

24 of 60 credits earned toward degree

Associate of Applied Science Degree — Building Construction					
To complete this degree at SCC:	CNST1326 - 3.5 CNST1328 - 3.5 GELO #6 10 credits	CNST1430 - 3 CNST1433 - 3 ACF52020 - 1 7 credits	CNST2532 - 4.5 CNST2533 - 4.5 CNST2634 - 2.5 11.5 credits	CNST2636 - 4 CNST2643 - 2 WELD1191 - 1.5 7.5 credits	36

Possible career fields: Concrete/masonry specialist, Carpenter, Cabinet Maker, Drafting/Estimating, House Construction, Project Foreman

SCC graduate salary: Recent graduates report \$37,000 per year (SCC 2018 Graduate Employment Report).

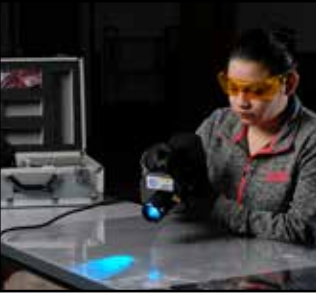
For more information: Jason Adams, 402-761-8209 or 800-933-7223 ext. 8209, jadams@southeast.edu or Academic Transfer Advisor: academictransfer@southeast.edu



GENERAL EDUCATION LEARNING OUTCOMES (GELOs)	
* Every degree program requires students to build a foundation of GELOs aimed to develop knowledge and skills beyond those specific to an occupation for academic, personal and social growth. Students should contact a program advisor to assist with the selection of GELO courses which will meet their program's graduation requirements.	GELO #1: Oral Communication GELO #2: Written Communication GELO #3: Critical Thinking & Problem Solving GELO #4: Global Awareness and Citizenship GELO #5: Analytical, Quantitative, and Scientific Reasoning GELO #6: Career and Life Skills

^ = Course is offered online.
 Please note: not all classes are available every term. Students much check availability in the credit class schedule. www.southeast.edu/classsschedules

CRIMINAL JUSTICE PATHWAY



	YEAR 1 - 11TH GRADE		YEAR 2 - 12TH GRADE		credits
	FIRST SEMESTER	SECOND SEMESTER	FIRST SEMESTER	SECOND SEMESTER	
CAREER PATHWAY	CRIM 1010 ^ Introduction to Criminal Justice 3 credits	CRIM 2030 ^ Police & Society 3 credits	CRIM 2100 ^ Juvenile Justice 3 credits	CRIM 1030 ^ Courts & the Judicial Process 3 credits	12
Suggested DC Advantage General Education Learning Outcomes (^GELOs) to meet program requirements	PSYC 1810 ^ Introduction to Psychology (GELO #3) 3 credits	SOCI 1010 ^ Diversity in Society (GELO #4) 3 credits	ENGL 1010 ^ English Composition I (GELO #2) and MATH 2170 ^ Applied Statistics (GELO #5) 6 credits	SPCH 1110 ^ Public Speaking (GELO #4) 3 credits	15

Scholarship savings: 27 credit hours × \$111.00 = \$2,997 ÷ 2 = **\$1,498.50**

27 of 60
credits earned
toward degree

Associate of Applied Science Degree – Criminal Justice				
To complete this degree at SCC:	CRIM 1020 - 3 CRIM 2000 - 3 CRIM 2080 - 3 CRIM 2200 - 3 CRIM 2240 - 3 15 credits	CRIM 2265 - 3 CRIM 2270 - 3 CRIM 2290 - 3 CRIM 2340 - 3 CRIM 2400 - 3 Adv. Appr. Elec. - 3 18 credits		33

Possible career fields: Correctional Officer, Criminal Justice Advocate, Police Officer, Security Specialist
SCC graduate salary: Recent graduates report \$37,000 per year (SCC 2018 Graduate Employment Report).
For more information: Rita M. Dondlinger, rdondlinger@southeast.edu, 402-323-3459 or Academic Transfer Advisor: academictransfer@southeast.edu



GENERAL EDUCATION LEARNING OUTCOMES (GELOs)	
* Every degree program requires students to build a foundation of GELOs aimed to develop knowledge and skills beyond those specific to an occupation for academic, personal and social growth. Students should contact a program advisor to assist with the selection of GELO courses which will meet their program's graduation requirements.	GELO #1: Oral Communication GELO #2: Written Communication GELO #3: Critical Thinking & Problem Solving GELO #4: Global Awareness and Citizenship GELO #5: Analytical, Quantitative, and Scientific Reasoning GELO #6: Career and Life Skills

^ = Course is offered online.
 Please note: not all classes are available every term. Students much check availability in the credit class schedule. www.southeast.edu/classchedules

EARLY CHILDHOOD EDUCATION PATHWAY



	YEAR 1 - 11TH GRADE		YEAR 2 - 12TH GRADE		credits
	FIRST SEMESTER	SECOND SEMESTER	FIRST SEMESTER	SECOND SEMESTER	
CAREER PATHWAY	ECED 1150 ^ Introduction to Early Childhood Education 3 credits	ECED 1120 ^ Preschool Child Development 2 credits	ECED 1260 ^ Early Childhood Health, Safety and Nutrition 3 credits	ECED 1130 ^ Social-Emotional Dev. & Behav. Guide. 3 credits	11
Suggested DC Advantage	PSYC 1250 ^ Interpersonal Relations (GELO #6) 3 credits	ECON 1200 ^ Personal Finance (GELO #3) 3 credits	ENGL 1010 ^ English Composition I (GELO #2) and MATH 1150 ^ College Algebra (GELO #5) 6 credits	SPCH 1110 ^ Public Speaking (GELO #1) 3 credits	15

Scholarship savings: 26 credit hours × \$111.00 = \$2,886 ÷ 2 = **\$1,443**

26 of 73
credits earned toward degree

Associate of Applied Science Degree — Early Childhood Education

To complete this degree at SCC:	ECED 1050 - 3 ECED 1060 - 3 ECED 1110 - 3 ECED 1160 - 3 ECED 1220 - 1 13 credits	ECED 1224 - 3 ECED 1230 - 2 ECED 1610 - 2 ECED 1620 - 1 ECED 1630 - 1 ECED 1640 - 1 ECED 2050 - 3 12 credits	ECED 2060 - 3 ECED 2065 - 5 ECED 2070 - 3 ECED 2450 - 3 ECED 2800 - 2 ECED 2900/2902 - 4 20 credits	47
---------------------------------	---	---	---	-----------

- Possible career fields:** Assistant Preschool Teacher, Child Care Center - Assistant, Nanny, Teacher Assistant, Toddler Specialist
- SCC graduate salary:** Recent graduates report \$24,000 per year (SCC 2018 Graduate Employment Report).
- Other important info:** Apply for the Volker Early Childhood Education Scholarship \$500
- For more information:** Crystal Kozak, 402-437-2455, ckozak@southeast.edu or Academic Transfer Advisor: academictransfer@southeast.edu



GENERAL EDUCATION LEARNING OUTCOMES (GELOs)

* Every degree program requires students to build a foundation of GELOs aimed to develop knowledge and skills beyond those specific to an occupation for academic, personal and social growth. Students should contact a program advisor to assist with the selection of GELO courses which will meet their program's graduation requirements.

- GELO #1: Oral Communication
- GELO #2: Written Communication
- GELO #3: Critical Thinking & Problem Solving
- GELO #4: Global Awareness and Citizenship
- GELO #5: Analytical, Quantitative, and Scientific Reasoning
- GELO #6: Career and Life Skills

^ = Course is offered online.

Please note: not all classes are available every term. Students much check availability in the credit class schedule. www.southeast.edu/classschedule

www.southeast.edu/highschoolstudentprograms

EDUCATION PATHWAY



	YEAR 1 - 11TH GRADE		YEAR 2 - 12TH GRADE		credits
	FIRST SEMESTER	SECOND SEMESTER	FIRST SEMESTER	SECOND SEMESTER	
	CAREER PATHWAY	EDUC 1110 ^ Introduction to Professional Education 3 credits	EDUC 2590 ^ Instructional Technology 3 credits	PSYC 1250 ^ Interpersonal Relations 3 credits	
Suggested DC Advantage courses for Associate of Arts Degree	HIST 2020^ American History II 3 credits	MATH 2170 Applied Statistics 3 credits	ENGL 1010 ^ English Composition I 3 credits	SPCH 1110 ^ Public Speaking 3 credits	12
Scholarship savings: 24 credit hours × \$111.00 = \$2,664 ÷ 2 = \$1,332.					24

credits earned toward degree

Degree — transfer to a four-year institution

To complete this degree:	Required courses for K-12 Education majors will vary, students should consult their intended transfer institution for specific degree requirements.
---------------------------------	---

Possible career fields: K-12 teacher
For more information: Corinne Neel, Academic Transfer Advisor, 402-437-2445, academictransfer@southeast.edu



GENERAL EDUCATION LEARNING OUTCOMES (GELOs)	
* Every degree program requires students to build a foundation of GELOs aimed to develop knowledge and skills beyond those specific to an occupation for academic, personal and social growth. Students should contact a program advisor to assist with the selection of GELO courses which will meet their program's graduation requirements.	GELO #1: Oral Communication GELO #2: Written Communication GELO #3: Critical Thinking & Problem Solving GELO #4: Global Awareness and Citizenship GELO #5: Analytical, Quantitative, and Scientific Reasoning GELO #6: Career and Life Skills

^ = Course is offered online.
 Please note: not all classes are available every term. Students much check availability in the credit class schedule. www.southeast.edu/classchedules

GEOGRAPHIC INFORMATION SYSTEMS TECH PATHWAY



	YEAR 1 - 11TH GRADE		YEAR 2 - 12TH GRADE		credits
	FIRST SEMESTER	SECOND SEMESTER	FIRST SEMESTER	SECOND SEMESTER	
CAREER PATHWAY	GIST 1110 ^ Introduction to Geospatial Technology 3 credits	GIST 1120 ^ Spatial Analysis and Modeling 3 credits	GIST 1130 ^ Data Acquisition & Management 3 credits	GIST 1140 ^ GIS Capstone 3 credits	12
Suggested DC Advantage General Education Learning Outcomes (* GELOs) to meet program requirements	ECON 1200 ^ Personal Finance (GELO #3) or any GELO elective 3 credits				3

Scholarship savings: 15 credit hours × \$111.00 = \$1,665 ÷ 2 = **\$832.50**

15 of 18
credits earned toward degree

Certificate — Geographic Information Systems Technology					
To complete this degree at SCC:	GIST1900 – Internship or GIST1901 – Cooperative Experience or GIST1150 – Advanced Exploratory GIS 3 credits				3

Possible career fields: GIS Technician, GIS Support Analyst, GIS Specialist, Cartographic Technician

SCC graduate salary: Recent graduates report \$38,500 per year (SCC 2018 Graduate Employment Report).

For more information: Katrina Patton, 402-437-2262 or 800-642-4075 ext. 2262, kpatton@southeast.edu or Academic Transfer Advisor: academictransfer@southeast.edu



GENERAL EDUCATION LEARNING OUTCOMES (GELOs)

* Every degree program requires students to build a foundation of GELOs aimed to develop knowledge and skills beyond those specific to an occupation for academic, personal and social growth. Students should contact a program advisor to assist with the selection of GELO courses which will meet their program's graduation requirements.

- GELO #1: Oral Communication
- GELO #2: Written Communication
- GELO #3: Critical Thinking & Problem Solving
- GELO #4: Global Awareness and Citizenship
- GELO #5: Analytical, Quantitative, and Scientific Reasoning
- GELO #6: Career and Life Skills

^ = Course is offered online.
 Please note: not all classes are available every term. Students must check availability in the credit class schedule. www.southeast.edu/classchedules

www.southeast.edu/highschoolstudentprograms

HEALTH CERTIFICATE PATHWAY



		YEAR 1 - 11TH GRADE		YEAR 2 - 12TH GRADE		credits
		FIRST SEMESTER	SECOND SEMESTER	FIRST SEMESTER	SECOND SEMESTER	
CAREER PATHWAY		HLTH 1150 Nursing Assistant - 4 or HLTH 1050 ^ Dental Terminology - 3 3-4 credits	HLTH 1350 Nutrition Aide - 3.5 or HLTH 1450 Physical Therapy Aide - 2 2-3.5 credits 2-3.5 credits	HLTH 1040 Medication Aide - 2.5 or MEDT 1100 Procedures in Phlebotomy - 2 2-2.5 credits	HLTH 1080 EKG Tech - 3 or HLTH 1090 Personal Care Aide - 3.5 OR HLTH 1250 Sterile Processing - 6 3.5-6 credits	9
Suggested DC Advantage General Education Learning Outcomes (GELOs) to meet program requirements		SOCI 1010 ^ Intro. to Sociology (GELO #4) or PSYC 1810 ^ Introduction to Psychology (GELO #3) 3 credits				3

Scholarship savings: 12 credit hours × \$111.00 = \$1,332 ÷ 2 = **\$666.**

Up to **12 of 12** credits earned toward degree

Certificate — Healthcare Services	
To complete this degree at SCC:	By successfully completing 12 Health Science hours and three general education hours, you will have earned the Healthcare Services Certificate from SCC.

- Possible career fields:** Nutrition Aide, Personal Care Aide, Nursing Assistant, Medication Aide, Phlebotomist
- SCC graduate salary:** Recent Healthcare graduates report \$22,000 per year (SCC 2018 Graduate Employment Report).
- For more information:** Kasey Edwardson, 402-437-2767, kedwardson@southeast.edu or Academic Transfer Advisor: academictransfer@southeast.edu

Find out more about the NHA Certified EKG Technician exam at <https://www.nhanow.com/certifications/ekg-technician>

****Please note:** Students must be 16 years of age at the beginning of HLTH1150, Nursing Assistant to enroll. Employment requirements for HLTH1040, HLTH1080 and MEDT1100 is 18 years of age.



GENERAL EDUCATION LEARNING OUTCOMES (GELOs)	
* Every degree program requires students to build a foundation of GELOs aimed to develop knowledge and skills beyond those specific to an occupation for academic, personal and social growth. Students should contact a program advisor to assist with the selection of GELO courses which will meet their program's graduation requirements.	GELO #1: Oral Communication GELO #2: Written Communication GELO #3: Critical Thinking & Problem Solving GELO #4: Global Awareness and Citizenship GELO #5: Analytical, Quantitative, and Scientific Reasoning GELO #6: Career and Life Skills

^ = Course is offered online.
 Please note: not all classes are available every term. Students much check availability in the credit class schedule. www.southeast.edu/classchedules

HEALTH PRE-NURSING PATHWAY



	YEAR 1 - 11TH GRADE		YEAR 2 - 12TH GRADE		credits
	FIRST SEMESTER	SECOND SEMESTER	FIRST SEMESTER	SECOND SEMESTER	
CAREER PATHWAY	HLTH 1150 Nursing Assistant 4 credits	SOCI 1010 ^ Introduction to Sociology 3 credits	PSYC 2960 ^ Life-span Human Development 3 credits	FSDT 1350 ^ Basic Nutrition - 3 or HLTH 1060 ^ Comp. Med. Term. - 3 or MEDA 1101 ^ Basic Medical Terminology 1.5 1.5-3 credits	13.5-16
Suggested DC Advantage General Education Learning Outcomes (~GELOs) to meet program requirements	MATH 1150 ^ College Algebra (GEO #5) 3 credits	SPCH 1110 ^ Public Speaking (GEO #1) 3 credits	ENGL 1010 ^ English Composition I (GEO #2) 3 credits		9

Scholarship savings: 29.5 credit hours × \$111.00 = \$3,274.50 ÷ 2 = **\$1,637.25.**

Up to **29.5 of 60**
credits earned
toward degree

Prerequisite Courses

To complete this degree at SCC:	<p style="text-align: center; font-size: 0.9em;">These courses are required for many health programs. Work with an SCC advisor to select courses for a pre-health program or degree.</p>
--	---

- Possible career fields:** Take courses and transfer to SCC nursing program or a four-year institution. Check with your receiving institution to see which courses will transfer.
- SCC graduate salary:** Recent Practical Nursing graduates report \$37,000 per year (SCC 2018 Graduate Employment Report).
- For more information:** Academic Transfer Advisor: academictransfer@southeast.edu



GENERAL EDUCATION LEARNING OUTCOMES (GELOs)

* Every degree program requires students to build a foundation of GELOs aimed to develop knowledge and skills beyond those specific to an occupation for academic, personal and social growth. Students should contact a program advisor to assist with the selection of GELO courses which will meet their program's graduation requirements.

- GEO #1: Oral Communication
- GEO #2: Written Communication
- GEO #3: Critical Thinking & Problem Solving
- GEO #4: Global Awareness and Citizenship
- GEO #5: Analytical, Quantitative, and Scientific Reasoning
- GEO #6: Career and Life Skills

^ = Course is offered online.
 Please note: not all classes are available every term. Students much check availability in the credit class schedule. www.southeast.edu/classchedules

INFORMATION TECHNOLOGY/NETWORKING/PROGRAMMING PATHWAY



	YEAR 1 - 11TH GRADE		YEAR 2 - 12TH GRADE		credits
	FIRST SEMESTER	SECOND SEMESTER	FIRST SEMESTER	SECOND SEMESTER	
CAREER PATHWAY	INFO1151 ^ Information Technology Fundamentals 3 credits	INFO1171 ^ PC Operating Systems 3 credits	INFO1281 ^ Networking Concepts 2 credits	INFO1214 ^ Programming Concepts 2 credits	10
Suggested DC Advantage General Education Learning Outcomes (^GELOs) to meet program requirements	MATH 1150 ^ College Algebra (GELO #5) 3 credits	PSYC 1810 ^ Intro. to Psychology (GELO #3) or POLS 1000 ^ American Government (GELO #4) 3 credits	ENGL 1010 ^ English Composition I (GELO #2) 3 credits	SPCH 1110 ^ Public Speaking (GELO #1) 3 credits	12

Scholarship savings: 22 credit hours × \$111.00 = \$2,442 ÷ 2 = **\$1,221.** **22 of 70** credits earned toward degree

Associate of Applied Science Degree – Computer Information Technology				
To complete this degree at SCC:	Courses depend on focus area. plus (GELO #6)			48

Possible career fields: Software development - mobile device, web development, mainframe computing – Network management – set-up, maintain and manage computer networks – Network Security – cyber security – Computer Support – technical support, help desk.

SCC graduate salary: Recent graduates report \$48,000 per year (SCC 2018 Graduate Employment Report).

For more information: Linda Bettinger, 402-437-2490 or 800-642-4075 ext. 2490, lbettinger@southeast.edu or Jo Schuster, 402-437-2492 or 800-642-4075 ext. 2492, jschuster@southeast.edu or Academic Transfer Advisor: academictransfer@southeast.edu



GENERAL EDUCATION LEARNING OUTCOMES (GELOs)	
* Every degree program requires students to build a foundation of GELOs aimed to develop knowledge and skills beyond those specific to an occupation for academic, personal and social growth. Students should contact a program advisor to assist with the selection of GELO courses which will meet their program's graduation requirements.	GELO #1: Oral Communication GELO #2: Written Communication GELO #3: Critical Thinking & Problem Solving GELO #4: Global Awareness and Citizenship GELO #5: Analytical, Quantitative, and Scientific Reasoning GELO #6: Career and Life Skills

^ = Course is offered online.
 Please note: not all classes are available every term. Students much check availability in the credit class schedule. www.southeast.edu/classchedules

MANUFACTURING-ENERGY PATHWAY



		YEAR 1 - 11TH GRADE		YEAR 2 - 12TH GRADE		credits
		FIRST SEMESTER	SECOND SEMESTER	FIRST SEMESTER	SECOND SEMESTER	
CAREER PATHWAY		ENER 1100 ^ Energy Industry Fundamentals 3 credits	ENER 2102 ^ Nuclear Energy 2 credits	ENER 2130 ^ Green Energy Technologies 2 credits	ENER 1110 Operator Safety 3 credits	10
Suggested DC Advantage	General Education Learning Outcomes (GELOs) to meet program requirements	MATH 1150 ^ College Algebra (GELO #5) 3 credits	ECON 1200 ^ Personal Finance (GELO #6) 3 credits	ENGL 1010 ^ English Composition I (GELO #2) 3 credits	SPCH 1110 ^ Public Speaking (GELO #1) 3 credits	12

Scholarship savings: 22 credit hours × \$111.00 = \$2,442 ÷ 2 = **\$1,221.**

22 of 66.5 credits earned toward degree

Associate of Applied Science Degree — Energy Generation Operations

To complete this degree at SCC:	Courses depend on focus area.				44.5
---------------------------------	-------------------------------	--	--	--	-------------

Possible career fields: Biofuels production facility operator, Coal-fires power plant operator, Combined Cycle power plant operator, Heating-Cooling plant operator, Hydroelectric Power plant operator, Nuclear power plant operator, Pipeline operator, Process plant operator, Refinery operator, Solar power plant operator, Water/wastewater treatment plant operator, Wind turbine farm operator, Wind turbine technician

SCC graduate salary: Recent graduates report \$56,000 per year (SCC 2018 Graduate Employment Report).

For more information: David Madcharo, 402-761-8464 or 800-933-7223 ext. 8394, dmadcharo@southeast.edu or Academic Transfer Advisor: academictransfer@southeast.edu



GENERAL EDUCATION LEARNING OUTCOMES (GELOs)

* Every degree program requires students to build a foundation of GELOs aimed to develop knowledge and skills beyond those specific to an occupation for academic, personal and social growth. Students should contact a program advisor to assist with the selection of GELO courses which will meet their program's graduation requirements.

- GELO #1: Oral Communication
- GELO #2: Written Communication
- GELO #3: Critical Thinking & Problem Solving
- GELO #4: Global Awareness and Citizenship
- GELO #5: Analytical, Quantitative, and Scientific Reasoning
- GELO #6: Career and Life Skills

^ = Course is offered online.

Please note: not all classes are available every term. Students much check availability in the credit class schedule. www.southeast.edu/classchedules

www.southeast.edu/highschoolstudentprograms

MANUFACTURING-WELDING PATHWAY



	YEAR 1 - 11TH GRADE		YEAR 2 - 12TH GRADE		credits
	FIRST SEMESTER	SECOND SEMESTER	FIRST SEMESTER	SECOND SEMESTER	
CAREER PATHWAY	WELD 1105 Oxyacetylene Welding & Cutting 3.5 credits	WELD 1101 SMAW I 3.5 credits	WELD 1122 GMAW Theory - 2 and WELD 1210 GMAW Lab I - 2.5 4.5 credits	WELD 2310 FCAW 2 credits	13.5
Suggested DC Advantage General Education Learning Outcomes (^GELOs) to meet program requirements	MATH 1020 ^ Technical Math (GELO #5) 3 credits	FSDT 1350 ^ Basic Nutrition (GELO #6) 3 credits	ENGL 1010 ^ Eng. Composition I (GELO #2) and ECON 1200 ^ Personal Finance (GELO #3) 6 credits	SPCH 1110 ^ Public Speaking (GELO #1) 3 credits	15

Scholarship savings: 28.5 credit hours × \$111.00 = \$3,163.50 ÷ 2 = **\$1,581.25.**

28.5 of 72.5
credits earned toward degree

Associate of Applied Science Degree – Welding Technology

To complete this degree at SCC:	WELD 1109 - 3 WELD 1128 - 3 WELD 1130 - 4 WELD 1134 - 1.5 WELD 1220 - 3 14.5 credits	WELD 1230 - 2.5 WELD 2320 - 3 WELD 2330 - 1.5 WELD 2340 - 2.5 WELD 2410 - 3 WELD 2420 - 1.5 14 credits	WELD 2450 - 3.5 WELD 2460 - 2 WELD 2510 - 3 WELD 2520 - 2 WELD 2530 - 3 WELD 2540 - 2 15.5 credits	44
--	---	--	--	-----------

Possible career fields:

Fabricator, Welder

SCC graduate salary:

Recent graduates report \$44,000 per year (SCC 2018 Graduate Employment Report).

For more information:

Mark Hawkins, mhawkins@southeast.edu, 402-437-2694 or
 Academic Transfer Advisor: academictransfer@southeast.edu



GENERAL EDUCATION LEARNING OUTCOMES (GELOs)

* Every degree program requires students to build a foundation of GELOs aimed to develop knowledge and skills beyond those specific to an occupation for academic, personal and social growth. Students should contact a program advisor to assist with the selection of GELO courses which will meet their program's graduation requirements.

- GELO #1: Oral Communication
- GELO #2: Written Communication
- GELO #3: Critical Thinking & Problem Solving
- GELO #4: Global Awareness and Citizenship
- GELO #5: Analytical, Quantitative, and Scientific Reasoning
- GELO #6: Career and Life Skills

^ = Course is offered online.

Please note: not all classes are available every term. Students must check availability in the credit class schedule. www.southeast.edu/classchedules

www.southeast.edu/highschoolstudentprograms

^ACCT1200 Principles of Accounting I	3	CHEM 1090 - General Chemistry I	4
<i>Prerequisite: Accounting Competency recommended.</i>		<i>Prerequisite(s): MATH 1100 or or appropriate college level math score</i>	
This course is designed to provide introductory knowledge of accounting principles, concepts, and practices. Included topics are the balance sheet, the income statement, the statement of owners' equity, the statement of cash flows, worksheets, journals, ledgers, accruals, adjusting and closing entries, internal controls, inventories, fixed and intangible assets, liabilities, equity, and financial statement analysis. This course provides a foundation for more advanced work in the fields of accounting and business.		This is the first course of a comprehensive chemistry sequence. Topics include nomenclature, atomic structure, chemical reactions, essentials of bonding, periodic properties, Valence Shell Electron Pair Repulsion Theory (VSEPR) modern bonding theories, stoichiometry, thermochemistry, and the chemistry of solids, liquids, gases. Lab must be taken concurrently.	
^AGRI1123 Agriculture Occupation Exploration	3	CNST1123 Concrete & Masonry Tools & Materials I	1.5
Overviews of occupations in the field of agribusiness. In-depth exploration of several broad occupational areas and personal interview of at least two agribusiness management level employers.		Theory designed to acquaint the student with materials and techniques for planning, estimating, and constructing masonry and concrete structures including foundations. Demonstrations, videos, and clinics emphasizing the best practices in concrete and form work.	
^AGRI1126 Introduction to Livestock Production	3	CNST1124 Concrete & Masonry Tools & Materials II	1.5
A comprehensive introduction to livestock production utilizing current literacy and terminology.		<i>Prerequisites: CNST1123</i>	
^AGRI1131 Crop & Food Science	3	A continuation of Concrete & Masonry Tools & Material I. Theory designed to acquaint the student with materials and techniques for planning, estimating, and constructing masonry and concrete structures including foundations. Demonstrations, videos, and clinics emphasizing the best practices in concrete and form work.	
Principles and practices of production of the major agronomic crops of the high plains.		CNST1125 Concrete & Masonry Applications I	1.5
^AGRI1171 Ag Technology	2	<i>Co-requisite: CNST1123</i>	
Introduction to agriculture technology applications used for solving agriculture problems with emphasis on logical and systematic decision making. Establishing a basic understanding of technology and how it's used in agriculture.		Laboratory application in proper use of concrete and masonry tools, materials. Experience in block and brick laying, concrete forming, and reinforcing and finishing. Safety training.	
^AGRI1177 Companion Animals	3	CNST1126 Concrete & Masonry Applications II	1.5
Principles and practices for the life cycle and care of companion animals which may include nutrient regimen, breed identification, various infections and non-infectious disease diagnostics and treatment, anatomy, physiology, parasitic life cycles and internal and external identification, medication requirements for certain problems and the importance of companion animals in contemporary society.		<i>Prerequisite: CNST1125 Co-requisite: CNST1124</i>	
AGRI1211 Fundamentals of Ag Marketing	3	A continuation of Concrete & Masonry Applications I. Laboratory application in proper use of concrete and masonry tools, materials. Experience in block and brick laying, concrete forming, and reinforcing and finishing. Safety training.	
Study of new market opportunities in the agriculture industry. Developing a marketing plan and promotional strategies for agriculture products.		CNST1226 Construction Tools and Materials I	1.5
AGRI1257 Live Animal Selection & Carcass Evaluation	2	Introduction to care, use and maintenance of hand tools, portable power and stationary lab equipment. New construction methods, materials and concepts. Origin, manufacturing processes, and characteristics and application of materials used in residential and light commercial construction today.	
Methods of selection and evaluation of live animals and carcasses. Training in selection of replacement breeding animals of economic importance. Purchasing slaughter animals and carcasses for primal cuts within the meat industry.		CNST1227 Construction Tools and Materials II	1.5
BIOS1010 General Biology	4	<i>Prerequisites: CNST1226</i>	
This course covers fundamental processes of cells and organisms, cell structure genetics, evolution, classification, diversity, and interaction of organisms at the molecular, cellular, organismic, ecosystems, and biosphere level. It is designed as both a course for non-majors and as a foundation course for those planning additional work in biology. Includes a lab.		A continuation of Construction Tools & Materials I. Introduction to care, use and maintenance of hand tools, portable power and stationary lab equipment. New construction methods, materials and concepts. Origin, manufacturing processes, characteristics and application of materials used in residential and light commercial construction today.	
*BIOS1090 General Botany	4	CNST1228 Construction Processes & Practices I	1.5
Survey of the plant kingdom with a study of representative plants from each of the major plant groups. Structure, relationships, economic importance and natural history of major plant groups. Lab is required concurrently.		<i>Co-requisite: CNST1226</i>	
BIOS1120 Introduction to Zoology	4	Introduction to hand tools, construction safety, machine woodworking, modern practices and processes used in the building construction industry. Carpentry techniques, competency in blueprint reading, proper layout practices, parts cutting and assembly procedures.	
Provides a survey of the animal kingdom. There is an emphasis on animal form and function, taxonomy, developmental biology, and the diversity of animal life. Laboratory exercises include observations and dissections of selected specimens. Lab is required concurrently.		CNST1229 Construction Processes & Practices II	1.5
^BSAD1050 Introduction to Business	3	<i>Prerequisite: CNST1228 Co-requisite: CNST1227</i>	
An introductory study and overview of the role of business in society as well as a discussion of the various disciplines of business including an overview of business organization, management, marketing, human resource management, and finance. Also, a study and discussion of various strategies for success of specific public and private firms as well as small business. Business vocabulary used to understand and interpret business news and information.		A continuation of Construction Processes & Practices I. Introduction to hand tools, construction safety, machine woodworking, modern practices and processes used in the building construction industry. Carpentry techniques, competency in blueprint reading, proper layout practices, parts cutting and assembly procedures.	
^BSAD2520 Principles of Marketing	3	^CRIM1010 Introduction to Criminal Justice	3
A study of the development of an effective marketing program including consumer behavior, product, pricing, distribution, and promotional strategies.		Provides an overview of the history, development and philosophies of the criminal justice system within America. Areas covered include crime and the criminal justice system, the police, the courts, corrections, and the juvenile justice system.	
^BSAD2540 Principles of Management	3	^CRIM1030 Courts & the Judicial Process	3
Introduction to management theory and practice with emphasis on the primary functions of planning, organizing, leading and controlling. Topics will include the ever-changing challenges and opportunities within the management field.		Surveys the United States judicial system. Topics include, but are not limited to, legal and constitutional concepts, institutions and processes. Coverage includes adult and civil courts.	
		^CRIM2030 Police and Society	3
		Examines the role of the police in relationship to law enforcement and American society. Topics include, but are not limited to the role and function of police, the nature of police organizations and police work, and the patterns of police-community relations.	

Please note that many SCC courses are offered in a variety of formats including face-to-face, online, and hybrid (50% or more face-to-face classroom instruction plus 50% or less online). See the Credit Class Schedule or the course listings on WebAdvisor each term for details on the method of delivery. * = Global Education Student World Denizen Course. ^ = Course offered online.

^CRIM2100 Juvenile Justice 3	^ENER2130 Green Energy Technologies 2
Examines the origins, philosophy, and objectives of the juvenile justice system. Topics include, but are not limited to causation of crime (i.e. race/gender, socioeconomic relevance, victimization), the juvenile court system, the law enforcement approach, corrections, and prevention.	<i>Prerequisite(s): Permission by Program Director</i> This course is an introduction to various green energy technologies including wind, solar, hydro and other types of renewable energy. Topics covered include physics, fluid dynamics, aerodynamics and various solar generation principles. A basic description of wind turbine systems and current and future solar generating systems is included as well as a description of hydroelectric facilities.
^ECED1120 Preschool Child Development 2	^ENGL1010 English Composition I 3
This course focuses on typical / atypical development of the child ages 3 through 5 years, in the domains of physical growth and motor skills, cognition and language, and social/ emotional development.	<i>Prerequisite: Appropriate placement score OR grade of "C" or higher in ENGL0985 (formerly ENGL0980).</i> Composition I offers instructional practice in the techniques of effective writing. The process of planning, writing, revising, and editing essays for particular audiences and purposes and research-related skills are also emphasized.
^ECED1130 Social-Emotional Development and Behavior Guidance 3	^ENGL1020 English Composition II 3
Study the stages of development and the multiple influences that impact social and emotional development of children birth to age eight. Gain an understanding of the adult role in the child's life and a wide range of effective techniques for supporting healthy development. Explore effective methods of guiding behavior and determining appropriate intervention.	<i>Prerequisite: A grade of "C" or higher in ENGL1010.</i> Students will read and analyze various texts and respond with research-based argumentative essays that demonstrate information literacy, critical-reading, and source integration. A significant research project is required.
^ECED1150 Introduction to Early Childhood Education 3	^ENGL2050 Modern Fiction 3
An overview of early childhood education, history, trends and the philosophies of various programs, diversity, inclusion, licensing standards, current legislation, professionalism and advocacy are examined.	<i>Prerequisite: A grade of "C" or higher in ENGL1010.</i> Exploration of short fiction and novels from 1900 to the present. Consideration of major literary critical theories and trends through the study of both American and international authors.
^ECED1260 Early Childhood Health, Safety and Nutrition 3	^^ENGL2100 Introduction to Literature 3
Defines interrelationship of safety, nutritional planning & health and how environmental factors affect young lives.	<i>Prerequisite: A grade of "C" or higher in ENGL1010.</i> Introduction to the major genres and conventions associated with literature. Includes fiction, poetry, and drama. By employing critical reading/thinking skills and analytical and creative writing skills, students will understand literature more fully. Exposure to a range of authors representing a variety of cultural and ethnic backgrounds.
^EDUC1110 Introduction to Professional Education 3	^ENTR1050 Introduction to Entrepreneurship 3
An overview of education in the United States viewed in terms of history, philosophy, finance and governance. Encourages critical thought regarding the role of education in our multicultural society, the role of the teacher, and educational practices in schools. The course is designed to help students explore education as a prospective career.	The student will evaluate the business skills and commitment necessary to successfully operate an entrepreneurial venture and review the challenges and rewards of entrepreneurship. The student will understand the role of entrepreneurial businesses in the United States and the impact on our national and global economy.
^EDUC2300 Introduction to Special Education 3	^FSDT1350 Basic Nutrition 3
<i>Prerequisite: EDUC1110</i> Introduction to the history, legislation, litigation, instruction, and evaluation of exceptional learners. Overview of the development and characteristics of exceptional learners, cultural issues, and collaboration found in K-12 classrooms.	The study of nutrients, digestion, absorption, metabolism, fitness, consumer concerns, food safety, nutrition throughout the life cycle, including cultural influences on food selection. Nutrition in relation to disease and world hunger is explored.
^EDUC2590 Instructional Technology 3	^GIST1110 Introduction to Geospatial Technology 3
This course is an introduction to a variety of technologies and strategies for use in the instructional process to accommodate all learners. The focus will also be on the social, ethical, legal and human issues surrounding the use of technology. NOTE: It is strongly recommended that students complete EDUC1110 prior to taking this class.	Introduction to the fundamentals of Geospatial Technology, including Geographic Information Systems (GIS), Global Positioning Systems (GPS), cartography, and remote sensing, through a series of hands-on computer-based exercises. Students will learn how to utilize geospatial technology to address social and environmental issues.
^ECON1200 Personal Finance 3	^GIST1120 Spatial Analysis and Modeling 3
<i>Prerequisite: Math competency recommended.</i> Covers the basic principles needed for effective personal financial management, including the practical applications of money management, budgeting, taxes, credit, insurance, housing, investments, and retirement planning.	<i>Prerequisite: GIST1110</i> An introduction to problem-solving and decision-making using geospatial analysis techniques. Students will learn to effectively solve spatial problems and make decisions by working with a variety of data and methods using the spatial analysis tools in ArcGIS software.
^ENER1100 Energy Industry Fundamentals 3	^GIST1130 Data Acquisition & Management 3
The course content focuses on understanding various types of energy and their conversion to useable energy such as electrical power. How generated electrical power is transmitted and distributed to the point of use. Natural gas transmission and distribution systems are described. Compliance with safety procedures is introduced. Careers in energy industry and entry points are covered. Energy system reliability and governance are explained.	<i>Prerequisite: GIST1110</i> A broad overview of the many capabilities of ArcGIS Pro will be explored. Students will receive a diverse sampling of industries, scenarios, and workflows that highlight the board appeal and many core functions offered by GIS. Students will explore some common geographic data formats used in ArcGIS and learn about sources of data and maps that can be incorporated into a GIS project. The student will learn the versatility of using geodatabases. The student will demonstrate how to design and build a geodatabase, migrate existing data to a geodatabase and edit data stored in a geodatabase.
^ENER1110 Operator Safety 3	^GIST1140 GIS Capstone 3
Operator-based safety topics including: OSHA 10-hour general industry certification, human performance tools, personal protective equipment, ladders, body harnesses, confined space, lock-out/tag-out, GHS, and fire extinguishers. Students will perform a supervised climb with fall-arrest-protection to above 20 feet. This course also provides aerial life and forklift training, arc flash awareness, and industrial accident case studies. Lab must be taken concurrently.	<i>Prerequisite: GIST1110, GIST1120, and GIST1130.</i> This course employs design principles to create and edit effective visual representations of data in different formats (e.g. hardcopy, digital, web) to complete projects that integrate the knowledge and skills learned in the three prerequisite GIS courses. In the capstone project students will create a project proposal, research design and carry it through to implementation, results, and analysis. Students will use the GIS functionality found within ESRI ArcGIS software as a tool to complete their projects.
^ENER2102 Nuclear Energy 2	
<i>Prerequisite(s): MATH1050</i> Nuclear energy is a source of power which is created by a nuclear reaction. This course will give the student a basic understanding of the theory and philosophy behind nuclear energy. It will explain the rigors of nuclear culture. The atom and its binding forces will be introduced. Characteristics and properties of the various radiation types will be covered in detail. Nuclear technologies in industry, medicine, and agricultural applications will be discussed.	

Please note that many SCC courses are offered in a variety of formats including face-to-face, online, and hybrid (50% or more face-to-face classroom instruction plus 50% or less online). See the Credit Class Schedule or the course listings on WebAdvisor each term for details on the method of delivery. * = Global Education Student World Denizen Course. ^ = Course offered online.

^GIST1150 Advanced Exploratory GIS 3	HLTH1250 Sterile Processing 6
<i>Prerequisite(s): GIST1110, GIST1120, GIST1130 and GIST1140</i>	This course teaches students to handle medical equipment and surgical instrumentation in a safe and sanitary manner in order to begin to prepare them for work within a sterile processing department.
In this course students will explore open source GIS applications, web mapping, collaborative mapping, beginning programming and cutting edge digital mapping in the 21st century.	
^HIST2010 American History I 3	HLTH1350 Nutrition Aide 3.5
A survey of American history from the Age of Discovery through the Civil War and Reconstruction. Emphasis is on the political, economic, cultural, social, and technological issues that arise in the development of the American nation.	This course teaches basic nutrition principles as they relate to menu planning, safe food handling and preparation, and fundamental culinary and baking skills such as knife skills, basic food preparation and service, food safety and sanitation, HACCP, and menu planning. Nutrition aides may work in long-term care facilities, hospitals, home health care, or assisted living facilities.
^HIST2020 American History II 3	HLTH1450 Physical Therapy Aide 3.5
A survey of American history from the end of the Civil War era to the present. Emphasis is on the political, economic, cultural, social, and technological issues that arise in America's development as a global power.	This course provides the student with the skills and knowledge to work as a physical therapy aide or tech in a variety of physical therapy settings. Students will learn about the history of the physical therapy profession, ethical codes of conduct, and the American Physical Therapy Association. Customer service, HIPAA and privacy, legal issues, and safe patient handling skills will be taught.
^HIST2100 World History to 1500 CE 3	^HORT1130 Introduction to Horticulture 3
Survey of the major political, social, cultural and economic developments of African, American, Asian, European, and Middle Eastern societies from the origins of civilization to the Early-Modern era (1500). Emphasis is placed on the comparison, interaction, and diversity of the world's major regions. Global Education Student World Denizen Course.	Introductory course designed to feature basic aspects and techniques of the horticulture industry. Emphasis will be placed on making the student aware of the different fields with the industry and the proper growing environment for indoor and outdoor horticulture crops.
HLTH1040 Medication Aide 2.5	HORT 1136 Plant Propagation 2
<i>Prerequisite: Successful completion of nursing assistant course</i>	Introductory study of plant propagation and reproduction. Areas of focus include vegetative reproduction, cross pollination and grafting procedures.
This course prepares participants to assume the role of medication aide in an assisted living and long-term care facility in the State of Nebraska. Successful completion of this course allows you to apply to the state of Nebraska to be placed on the Medication Aide Registry. **Please note: Employment requirements for HLTH1040, HLTH1080 and MEDT1100 is 18 years of age.	HORT1154 Greenhouse Management 2
^HLTH1050 Dental Terminology 3	Study of greenhouse operations including ventilation, lighting, and temperature control. Pest management is not only important in turfgrass management, but also in other horticulture crops. We feel it is important to have a class where all types of pests are taught. On golf courses you won't just be treating turf pests but also pests that affect trees and other ornamentals. We will our students will benefit more to this well rounded approach of Horticulture Pest Management. It is also important for horticulturalists to know turfgrass pests as well. Before, we did not have a class that taught only Horticulture pests, we feel this is a great addition to this course to incorporate all our student's needs.
This course is intended for students who are interested in the dental assisting profession either in the exploratory stage or an individual that is currently working in the field and would like to obtain a base knowledge of proper Dental Terminology. The course modular approach ensures that students learn and comprehend the language of dentistry on a much deeper level and build a solid foundation for understanding terms within the profession.	^HORT1216 Horticulture Business Management 3
^HLTH1060 Comprehensive Medical Terminology 3	Introduction to management principles in horticulture. Various topics will be discussed that are crucial to the management of a horticultural based business. Students will discuss the start-up of a horticultural based business and the financial knowledge needed to run such a business.
This course establishes a solid foundation of prefixes, suffixes, word roots, abbreviations, medical terms and symbols. It emphasizes understanding the medical vocabulary as it applies to the anatomy, physiology, pathology, diagnostic procedures, and therapeutic procedures of the human body.	^INFO1151 Information Technology Fundamentals 3
HLTH1080 Electrocardiograph (EKG) Technician 3.5	<i>Prerequisite: Appropriate placement scores or ENGL0960, or by permission</i>
The Electrocardiograph (EKG) Technician performs electrocardiographs according to physician's orders and protocols. This course prepares students for the tasks and responsibilities that include: equipment operation, maintaining data reports, performing EKG procedures to assess heart rhythm and rate in patients. **Please note: Employment requirements for HLTH1040, HLTH1080 and MEDT1100 is 18 years of age.	This course cover the fundamentals of computer concepts and terminology for desktop and mobile devices. Topics include hardware components, software overview, business and social aspects of computers, and Internet research.
HLTH1090 Personal Care Aide 3.5	^INFO1171 PC Operating Systems 3
The Personal Care Aide (PCA) training will prepare students to provide non-medical support services in the homecare and long term care environment. Learn the core competencies to provide care and comfort of disabled, elderly, and chronically ill patients. The course provides behavioral interventions and proactive strategies to assist in daily activities, personal hygiene, and communication with individuals and their families.	An introduction to features and capabilities of both Microsoft Windows and Linux operating systems, including disk organization and file management. The course includes extensive use of command line interfaces.
HLTH1100 Nutrition for the Healthcare Provider 2	^INFO1214 Programming Concepts 2
This course focuses on basic concepts of nutrition for students pursuing careers in nursing and other health science fields. Students will explore nutrients, digestion, absorption, metabolism, food safety, nutrition through the life cycle, and cultural influences on food selection. The impact of nutrition on health status and in relation to disease is explored.	<i>Co-requisite(s): INFO1151, INFO1171.</i>
HLTH1150 Nursing Assistant 4	This course is an introduction to problem solving and structured program design. Topics include programming basics, decisions, loops, arrays, data validation, and coding of modules/functions.
<i>Prerequisite: Must be at least 16 years old</i>	^INFO1281 Networking Concepts 2
Overview of the health care system and role of the nursing assistant as a health care team member. Discussions on the concepts of basic human needs, professional behavior, communication, legal/ethical issues, and multicultural diversity. Teaches basic nursing skills including bathing, assisting with dining, ambulating, transferring, and toileting. Included in this course are classroom, nursing lab and clinical experiences in a health care setting. Course is approved by the Nebraska Department of Health and Human Services Regulation and Licensure. Upon successful completion of this course, the student is eligible to test for placement on the Nebraska Nursing Assistant Registry. **Please note: Students must be 16 years of age at the beginning of HLTH1150, Nursing Assistant, to enroll.	<i>Co-requisite(s): INFO1151, INFO1171</i>
	This course provides an overview of data communications and network concepts and terminology. Students explore hardware, addressing, network topologies, communication protocols, network design, security, and standards.
	MATH 1020 - Technical Math 3
	<i>Prerequisite(s): A grade of "C" or higher in MATH 0950 or a grade of "B" or higher in MATH 0953 or appropriate score on the math placement test.</i>
	This course provides the practical mathematics skills needed in a wide variety of occupational areas, including plumbing, welding, transportation, electrical/electronics, construction, machine technology, agriculture, HVAC, health, and many more. Students will receive a direct practical approach that emphasizes careful, complete explanations and actual on-the-job applications.

Please note that many SCC courses are offered in a variety of formats including face-to-face, online, and hybrid (50% or more face-to-face classroom instruction plus 50% or less online). See the Credit Class Schedule or the course listings on WebAdvisor each term for details on the method of delivery. * = Global Education Student World Denizen Course. ^ = Course offered online.

<p>*MATH1150 College Algebra 3 <i>Prerequisites: A grade of "C" or higher in MATH1100 or a grade of "B" or higher in MATH1103 or appropriate score on the math placement test.</i> This course is the study of relations, functions and their graphs, equations and inequalities, polynomial and rational functions, exponential and logarithmic functions, systems of equations and inequalities.</p>	<p>PSYC 2960 - Life-span Human Development 3 <i>Prerequisite(s): PSYC 1810 or SOCI 1010.</i> Integration of the basic concepts and principles of physical, cognitive and psychosocial development at each major stage of life. Provides an essential background for students in psychology, nursing, education, social welfare and home economics; for workers in community service; and for parents and prospective parents. Global Education Student World Denizen Course.</p>
<p>MATH1200 Trigonometry 3 <i>Prerequisite: "C" or higher in MATH1150 or appropriate score on the math placement test.</i> A study of trigonometry in preparation for advanced math and science coursework. Use definitions of trigonometric functions to establish properties, create graphs, establish identities and formulae, and define inverse trigonometric functions. Use trigonometric functions and their inverses to solve trigonometric equations, and applications. Graphing in polar coordinates, and vector arithmetic.</p>	<p>^SOCI1010 Introduction to Sociology 3 Introduction to the basic principles of sociology, including the study of sociological research, theoretical perspectives, culture, socialization, social structure, social institutions, deviance, inequalities of class, race/ethnicity, gender, and age, as well as stratification, demography, and population.</p>
<p>MATH1600 Analytic Geometry & Calculus I 5 <i>Prerequisites: A grade of C or higher in MATH1150 and MATH1200 or a C or higher in MATH1300 or appropriate placement score.</i> This course is a study of analytical geometry and single variable calculus. Topics include limits, continuity, derivatives, applications of derivatives, integrals, and applications of integrals.</p>	<p>^SPCH1110 Public Speaking 3 This course will enable students to master the skills required of speaking in today's workplace and society. This course will focus on the organization, preparation, research, and evidence needed for a presentation that is tailored to fit the audience. This course will also enhance the students' listening skills which will assist them in everyday situations.</p>
<p>MATH1700 Calculus & Analytic Geometry II 5 <i>Prerequisite: A grade of "C" or higher in MATH1600 or equivalent.</i> Continuation of MATH1600. Study of antiderivatives, methods of integration; numerical methods, coordinates and conics, differential equations, Taylor series, and an introduction to differentiation and integration of vector valued functions. A graphing calculator or use of mathematical software may be required.</p>	<p>WELD1101 SMAWI 3.5 Study of Shielded Metal Arc Welding theory, safety, applications, procedures, and welding practices. Beginning welding of carbon steel on various joints and with various electrodes. Explanation of safe operation and proper use of equipment, power tools and hand tools.</p>
<p>MATH2170/BSAD2170 Applied Statistics 3 <i>Prerequisites: A grade of "C" or higher in MATH1100 or a grade of "B" or higher in MATH1103 or appropriate score on the math placement test.</i> The practical application of statistical thinking to contemporary issues; collection and organization of data; probability distributions; statistical inference; estimation; and hypothesis testing.</p>	<p>WELD1105 Oxyacetylene Welding and Cutting 3.5 <i>Prerequisite: WELD1101</i> Study of the theory, safety, equipment and applications of the Oxyacetylene Welding Process. Laboratory exercises with the Oxyacetylene Welding, Braze Welding, Oxyacetylene Cutting and related processes. Explanation of and proper use of equipment and measuring tools.</p>
<p>*MEDA1101 Basic Medical Terminology 1.5 A basic study of word parts, medical terms, and abbreviations as it pertains to all of the body systems.</p>	<p>WELD1122 GMAW Theory 2 <i>Prerequisites: WELD1101, WELD1105</i> Study of Gas Metal Arc Welding theory, safety, applications, manipulative skills, welding principles, and procedures. Study and use of various filler wires and shielding gases and welding power source set-up.</p>
<p>MEDT1100 Procedures in Phlebotomy 2 Introduction to the principles and skills needed to safely perform venipuncture and capillary blood collection techniques and special collection procedures. Quality assurance procedures pertaining to collection and transport of specimens, laboratory safety, ethical and legal issues pertaining to phlebotomy, and anatomy and physiology of cardiovascular system included. Supervised instruction and experience in collection techniques in lab. **Please note: Employment requirements for HLTH1040, HLTH1080 and MEDT1100 is 18 years of age.</p>	<p>WELD1210 GMAW Lab I 2.5 <i>Prerequisite: WELD1122</i> Beginning welding of carbon steel with the Gas Metal Arc Welding process on various joint configurations.</p>
<p>*MUSC1010 Introduction to Music (Music Appreciation) 3 An introduction and overview of the history of Western art music, from the Middle Ages to modern times. Includes the elements of music, historical style periods, and major composers and selected works.</p>	<p>WELD2310 FCAW 2 <i>Prerequisite: WELD1122</i> Theory and laboratory exercises using the Flux Cored Arc Welding process in the flat, horizontal, vertical and overhead positions.</p>
<p>*PHIL2610/RELS2610 Comparative Religions 3 <i>Corequisite: ENGL0985 with a grade of C or higher.</i> This course will offer a cross-cultural introduction to the world's major religious/philosophical traditions or faith systems through a comparison of historical origins, rituals, beliefs, practices, worldviews, original religious texts and other important sources. Interdisciplinary approach to study of religion and various approaches to study of religious systems are a part of the world religions traditions assessment.</p>	
<p>*POLS1000 American Government 3 A study of the functioning of the American political system through an analysis and application of its underlying theories.</p>	
<p>*PSYC1250 Interpersonal Relations 3 Personal development and adjustment, self-esteem building, values clarification and decision-making, interpersonal communication skills, appreciation of diversity, development of healthy personal and professional relationships.</p>	
<p>*PSYC1810 Introduction to Psychology 3 An introduction to the science of psychology including the application of critical thinking to the study of learning theory, memory, personality, growth and development, biological and neurological aspects, abnormal behavior, therapies, intelligence, motivation, emotion, sensation, perception, and theoretical perspectives.</p>	

Please note that many SCC courses are offered in a variety of formats including face-to-face, online, and hybrid (50% or more face-to-face classroom instruction plus 50% or less online). See the Credit Class Schedule or the course listings on WebAdvisor each term for details on the method of delivery. * = Global Education Student World Denizen Course. ^ = Course offered online.

NEBRASKA DEPARTMENT OF EDUCATION CTE COURSES AND PROGRAMS OF STUDY

SCC #	Title	NDE Course Code
AGRICULTURE, FOOD, AND NATURAL RESOURCES CLUSTER		
AGRI-1123	Ag Occupation Exploration	011009
AGRI-1126	Introduction to Livestock.....	NDCTE
AGRI-1131	Crop & Food Sciences.....	014000
AGRI-1171	Ag Technology	NDCTE
AGRI-1177	Companion Animals.....	011006
AGRI-1211	Fundamentals of Ag Marketing	011011
AGRI-1257	Live Animal Selection & Carcass Evaluation	011005
HORT-1130	Introduction to Horticulture	011007
HORT-1136	Plant Propagation	011007
HORT-1154	Greenhouse Management	NDCTE
HORT-1216	Horticulture Business Management	NDCTE

SCC #	Title	NDE Course Code
BUSINESS, MANAGEMENT AND ADMINISTRATION CLUSTER		
ACCT-1200	Principles of Accounting I	030302
BSAD-1050	Introduction to Business	032400
ENTR-1050	Introduction to Entrepreneurship.....	032600
BSAD-2520	Principles of Marketing.....	038201
BSAD-2540	Principles of Management	032802

SCC #	Title	NDE Course Code
FINANCE CLUSTER		
ECON-1200	Personal Finance	033000

SCC #	Title	NDE Course Code
EDUCATION & TRAINING CLUSTER		
EDUC-1110	Introduction to Professional Education	350010
EDUC-2300	Introduction to Special Education.....	NDCTE
EDUC-2590	Instructional Technology	NDCTE

SCC #	Title	NDE Course Code
HUMAN SERVICES CLUSTER		
FSDT-1350	Basic Nutrition	090124
PSYC-2960	Life-Span Human Development.....	090123
PSYC-1250	Interpersonal Relations.....	090116
ECED-1120	Preschool Childhood Development.....	090119
PSYC-1810	Psychology	151200
SOCI-1010	Sociology	151300
ECED-1150	Introduction to Early Childhood Education	090121
ECED-1260	Early Childhood Health, Safety & Nutrition.....	NDCTE
ECED-1130	Social-Emotional Development & Behavior Guidance	NDCTE

SCC #	Title	NDE Course Code
HEALTH SCIENCES CLUSTER		
HLTH-1040	Medication Aide.....	077401
HLTH-1050	Dental Terminology	NDCTE
HLTH-1060	Comprehensive Medical Terminology.....	NDCTE
HLTH-1080	Electrocardiograph (EKG) Technician	NDCTE
HLTH-1090	Personal Care Aide.....	NDCTE
HLTH-1150	Nursing Assistant	077400
HLTH-1250	Sterile Processing.....	NDCTE
HLTH-1350	Dietary Aide.....	NDCTE
HLTH-1450	Physical Therapy Aide	NDCTE
MEDA-1101	Basic Medical Terminology	077600
MEDT-1100	Procedures in Phlebotomy.....	077446

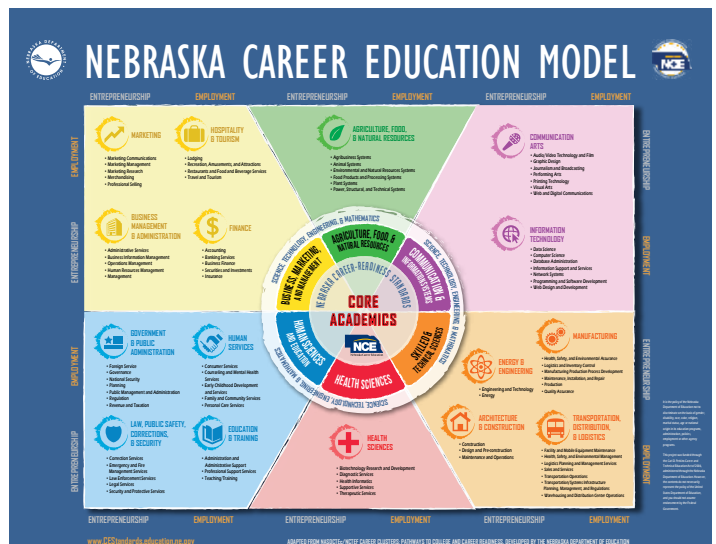
SCC #	Title	NDE Course Code
ENERGY & ENGINEERING CLUSTER		
ENER-1100	Energy Industry Fundamentals.....	100407
ENER-1110	Operator Safety.....	NDCTE
ENER-2102	Nuclear Energy.....	NDCTE
ENER-2130	Green Energy Technologies.....	100408

SCC #	Title	NDE Course Code
INFORMATION TECHNOLOGY CLUSTER		
INFO-1151	Information Technology Fundamentals.....	270504
INFO-1171	PC Operating Systems	270606
INFO-1214	Programming Concepts.....	270403
INFO-1218	Networking Concepts	270601

SCC #	Title	NDE Course Code
ARCHITECTURE & CONSTRUCTION CLUSTER		
CNST-1123/1124	Concrete & Masonry Tools & Material I & II.....	NDCTE
CNST-1125/1126	Concrete & Masonry Applications I & II.....	NDCTE
CNST-1226/1227	Tools & Materials II & II	100100
CNST-1228/1229	Construction Processes & Practices II.....	100120

SCC #	Title	NDE Course Code
LAW, PUBLIC SAFETY CORRECTIONS & SECURITY CLUSTER		
CRIM-1010	Introduction to Criminal Justice	390015
CRIM-2100	Juvenile Justice.....	NDCTE
CRIM-2030	Courts & the Judicial Process	390025
CRIM-2100	Police & Society	390026

SCC #	Title	NDE Course Code
MANUFACTURING CLUSTER		
WELD-1101	SMAW I.....	NDCTE
WELD-1105	Oxyacetylene Welding & Cutting	016004
WELD-1122	GMAW Theory	101930
WELD-1210	GMAW Lab I	101940
WELD-2310	FCAW	NDCTE



Southeast Community College's SENCAP supports the Nebraska Department of Education's Career Education Model.
<https://www.education.ne.gov/nce/CareerClustersResources.html>
 For more information on careers in Nebraska, go to www.nebraskacareerconnections.org.

For a complete list of Course Codes and Clearing Endorsements visit <https://cestandards.education.ne.gov/>



SENCAP/DUAL-CREDIT ADVANTAGE APPLICATION

NEW Students must complete and submit this application form to be considered for participation/enrollment in Southeast Nebraska Career Academy Partnership (SENCAP) or DC Advantage's dual-credit courses.

SENCAP - CAREER ACADEMY PATHWAY

<input type="checkbox"/> Agriculture	<input type="checkbox"/> Early Child. Education	<input type="checkbox"/> Health	<input type="checkbox"/> Manufacturing - Energy
<input type="checkbox"/> Business	<input type="checkbox"/> Education (K-12)	<input type="checkbox"/> Horticulture	<input type="checkbox"/> Manufacturing - Welding
<input type="checkbox"/> Construction	<input type="checkbox"/> GIS	<input type="checkbox"/> Info Tech (Comp.)	
<input type="checkbox"/> Criminal Justice		<input type="checkbox"/> Livestock	

and/or **DC ADVANTAGE**

ONLY taking General Education Learning Outcome classes, **NOT** Career Academy Pathway classes

BOTH

Enrolling in BOTH an Academy Pathway, and taking GELOs

Student Information (Please type or print neatly in black ink)

Student Name _____ Birth Date* _____
Last First Middle Initial mm/dd/yyyy

➔ Student Social Security Number _____ - _____ - _____ SCC ID# _____

Mailing Address/City/State/Zip _____

Student Cell Phone# _____ Home Phone# _____

Student Email Address (REQUIRED) _____

High School _____ Graduation Year: _____

Gender: <input type="checkbox"/> Male <input type="checkbox"/> Female	Ethnicity (select one): <input type="checkbox"/> Hispanic or Latino <input type="checkbox"/> Not Hispanic or Latino	Race (select one or more): <input type="checkbox"/> American Indian or Alaska Native <input type="checkbox"/> Asian	<input type="checkbox"/> Black or African American <input type="checkbox"/> Native Hawaiian or Other Pacific Islander <input type="checkbox"/> White
--	---	---	--

FERPA/RELEASE OF INFORMATION: I have read and understand that my educational records at Southeast Community College are protected by the Family Educational Rights and Privacy Act of 1974 (FERPA). I understand I am not required to authorize a Release of Information for my parent(s)/guardian(s) in order to participate in the SENCAP/DC Advantage program. I also understand I can rescind or make changes to a Release of Information at any time by contacting The Registration and Records Office at Southeast Community College.

YES, I hereby grant permission for Southeast Community College to share my SENCAP/DC Advantage educational records, including billing statements, with my parent(s)/ guardian(s) listed below:

Release of Information to: Parent/Guardian Names (s) _____

Student Signature **X** _____ Date _____
mm/dd/yyyy

Parent/Guardian Information

I grant my student permission to enroll in dual-credit courses through SENCAP/DC Advantage during the school year. I understand I am responsible for all tuition and or fees associated with dual-credit courses less any scholarship or payments made by their high school or third parties. I am aware that if my student withdraws from a course after the tuition refund date, I am still responsible for tuition and fees. I understand that my student failing dual-credit courses has consequences and may cause a student to be ineligible for Federal Financial Aid after high school graduation. I understand my student's FERPA rights.

PRINT Parent/Guardian Name _____ Primary Phone# _____

Parent/Guardian Signature **X** _____ Date _____
mm/dd/yyyy

High School Permission

This student has demonstrated the ability to benefit from college-level courses and has met all prerequisites. Approval is granted.

Counselor/Administrator Signature **X** _____ Date _____
mm/dd/yyyy

MAKE A COPY OF THIS FORM FOR YOUR RECORDS.

FERPA: Southeast Community College has developed policies and procedures in compliance with the Family Educational Rights and Privacy Act of 1974 (FERPA). FERPA is a federal law that protects the privacy of student educational records. The law applies to all schools that receive funds under an applicable program of the U.S. Department of Education. FERPA gives parents certain rights with respect to their children's education records. These rights transfer to the student when they reach the age of 18 or attend a school beyond the high school level. To see the SCC policy, please visit www.southeast.edu/legalnotices and click on FERPA.

For assistance completing this form, contact the SENCAP/Dual Credit Administrative Director, Erin May, at emay@southeast.edu or 402-437-2859.

OFFICE USE ONLY
Data Entry
Date

GENERAL INFORMATION FOR APPLICATION TO SENCAP/DUAL-CREDIT

EXPECTATIONS

1. Enrollment of high school students at Southeast Community College is limited to students who have demonstrated the ability to be successful in college-level courses. Depending on conditions and/or situations, exceptions to the minimum age requirement may be granted.
2. Classes taken for college credit will be recorded on a permanent college transcript.
3. The student is expected to continue high school which includes regular attendance and maintaining satisfactory academic progress.
4. Regular tuition and fees will be charged. Parents are responsible for all tuition and fees less any scholarships or payments made by the high schools or other third parties.
5. Students enrolled must abide by all Southeast Community College rules and regulations, including drop deadlines for tuition refunds.
6. Failing college classes has consequences and may cause a student to be ineligible for Federal Financial Aid after graduation.
7. Students may be responsible for the cost of textbooks. Please check with your high school.
8. This form must be completed and signed by the student, parent/guardian, and high school representative prior to registration.
9. If payment is not received, Southeast Community College reserves the right to withdraw the student or place a hold on the student's account which will affect the ability to register for future classes and/or to receive official college transcripts.
10. Students have read the Honor Statement available in the SENCAP Guidebook and will adhere to those guidelines.

STUDENT EDUCATIONAL RECORDS:

According to FERPA, in situations where a student is enrolled in both a high school and a postsecondary institution, the two schools may exchange information on that student in order to provide educational services.

If the student is under the age of 18, the parent(s)/guardian(s) still retain their rights under FERPA at the high school, and may inspect and review any records sent by the postsecondary institution to the high school.

As a post-secondary institution, Southeast Community College does not provide information to parents or guardians without:

- a. written permission from the student and/or
- b. documentation attesting that the student is a dependent, as defined under section 152 of the Internal Revenue Code.

RELEASE OF INFORMATION TO PARENT(S)/GUARDIAN(S):

I understand that my educational records are protected by the Family Educational Rights and Privacy Act of 1974 (FERPA). I understand that I am not obligated to sign a Release of Information for my parent(s)/guardian(s) in order to participate in the SENCAP/DC Advantage program and that I can rescind or make changes to this Release of Information at any time by contacting The Registration and Records Office at Southeast Community College.



(POLICY OF) PRIVACY OF EDUCATIONAL RECORDS/FERPA

(from the SCC Catalog 2/13/2019) Southeast Community College has developed policies and procedures in compliance with the Family Educational Rights and Privacy Act of 1974 (FERPA). FERPA is a federal law that protects the privacy of student education records. The law applies to all schools that receive funds under an applicable program of the U.S. Department of Education. FERPA gives parents certain rights with respect to their children's education records. These rights transfer to the student when they reach the age of 18 or attends a school beyond the high school level. Students to whom the rights have transferred are "eligible students."

FERPA

Generally, you have the following rights: to inspect and review your educational records; to a hearing to challenge the contents of your records; and to receive copies of all or part of your educational records upon request.

All requests for student records, information, and/or questions relating to the release of records and information must be in writing and directed to the campus Registration and Records Office.

FERPA permits public disclosure of directory information without the student's consent. Directory information is information contained in a student's education record that would not generally be considered harmful or an invasion of privacy if disclosed.

Directory information consisting of the items listed below may be released without the student's consent:

- Student Name
- Major Field of study
- Dates of attendance
- Enrollment status
- Most recent previous school attended
- Degrees and awards received
- Honors and awards received, including Dean's List and other academic honors
- Participation in officially recognized co-curricular activities (e.g. music, sports)
- Weight and height of athletic team members
- Parking permit number and auto license number
- Photograph/Video*

When available, your physical address, email address and/or telephone number may be released at the discretion of the Student Affairs Office.

*Use of Photographs/Video:

Photographers/videographers employed or contracted by SCC regularly take photographs/video of people, either individually or in a group, to illustrate or describe various aspects of the College and campus life. These photographs/video will be taken at public venues such as athletic events and concerts. Or they may be taken in organized campus photo/video shoots where the subjects will have given verbal consent to be photographed/videotaped. Individuals who are photographed/videotaped while attending a public event or who verbally agree to participate in a photo/video shoot will be understood to have authorized SCC to use their likeness in print and electronic materials to promote the College. The College will retain the usage rights to the photographs/video in perpetuity.

To avoid having Directory Information released, you must submit a written request to the campus Registration and Records Office within 10 classroom/business days, not including Saturdays, Sundays, and holidays, after initial enrollment in the College. After the initial 10-day period, any new request for withholding of directory information shall require a 10-classroom day (not including Saturdays, Sundays, and holidays) written notice to the campus Registration and Records Office to become effective.

STUDENT CODE OF CONDUCT

Student Code of Conduct Overview

Examples of behavioral expectations that are included in the Standards of Conduct, Formal Conduct Hearing Procedures, definitions, and other applicable Student Code of Conduct procedures can be found in the comprehensive SCC Student Code of Conduct located with the campus Dean of Students and Vice President for Student Affairs or online at www.southeast.edu/philosophyofstudentconduct/.



STANDARDS OF CONDUCT

Honesty and Integrity

Students should act in a manner that demonstrates honesty and integrity.

Accountability and Respect for Others

Students should act in a manner that demonstrates accountability and respect for others.

Kindness and Compassion

Students should act in a manner that demonstrates kindness and compassion.

Adherence to Principles of Diversity

Southeast Community College is committed to maintaining learning and working environments that are free from all forms of illegal harassment and discrimination. The College will not tolerate harassment or retaliation in the workplace or educational environment whether committed by faculty, staff, or students, or by visitors to the College while they are on College-owned or controlled property or at events conducted, sponsored or sanctioned by the College. Each member of the College community is responsible for fostering civility, for being familiar with this policy, and for refraining from conduct that violates this policy.

Conduct Demonstrating Lack of Fulfillment to Personal and Academic Responsibilities

Students should act in a manner that fulfills their personal and academic responsibilities.

SERVICES FOR STUDENTS

CAREER ADVISING CENTER

- Help you identify, assess and understand your strengths, interests, values and personal characteristics which will help you make a thoughtful career choice.
- Work with you to learn the educational requirements and occupational outlook for careers of interest.
- Provide resources for further career exploration, job shadowing and/or informational interviewing.
- Assist with selecting and applying to any of the SCC programs.
- You've found a pathway. Now, let SCC's Career Advising Center help you turn your pathway into a career!

To schedule an appointment, call us at:

Beatrice: 402-228-8242

Lincoln: 402-437-2620

Milford: 402-761-8202

ACADEMIC TRANSFER ADVISING

Meet with an SCC transfer advisor for guidance in your academic planning. An advisor can discuss your dual-credit courses and discuss transfer options with you. Please contact Academic Transfer advising with questions or to schedule an appointment.

Beatrice: 402-228-8278

email: academictransfer@southeast.edu

Lincoln: 402-437-2445 or 402-437-2470

www.southeast.edu/transfer-advising

Milford: 402-761-8283

STUDENT SUPPORT AND ACCOMMODATIONS RESOURCE OFFICE

The Student Support and Accommodations Resource office helps students set up accommodations while enrolled in classes at Southeast Community College.

Students who are involved with the Individualized Education Program (IEP) at their high school need to apply for accommodations for their college classes.

- NOTE: The IEP does not apply to the college classes that a student takes at SCC through the SENCAP program.

If you meet any of the following criteria, you may qualify for accommodations:

- Students who experience a disability
- Students who have or have had an IEP or 504 Plan in high school
- Students who are expecting a child

Students can contact the SENCAP/Dual-Credit Coordinator working with their school to apply for accommodations through SCC.

Confidentiality: The Student Support and Accommodations Resource Office keeps all records and accompanying documentation of students with disabilities, pregnant and parenting students, confidential.

THE SENCAP MISSION

SENCAP is committed to preparing high school juniors and seniors to be both college- and career-ready by providing them with active, engaged and relevant learning opportunities.

THE SCC MISSION

The mission of Southeast Community College is to empower and transform its students and the diverse communities it serves. The College provides accessible, dynamic, and responsive pathways to career and technical, academic transfer, and continuing education programs. Student success and completion is maximized through collegiate excellence, exemplary instruction, comprehensive student support services, enrichment programs, and student-centered processes. SCC is committed to a proactive and evidence-based approach that continually assesses and responds to student, community, and employer demand for higher education.

LIMITATIONS OF PUBLICATION INFORMATION

This publication should not be considered a contract between SCC and any prospective student. SCC's Board of Governors reserves the right to make changes in this publication during the life of the publication and without notice.

SCC BOARD OF GOVERNORS

Kathy Boellstorff, Johnson; Tim Cerveny, Wilber; Robert J. Feit, Lincoln; James J. Garver, Lincoln; Keith Hammons, Weeping Water; Dale Kruse, Beatrice; Edward C. Price, Lincoln; Lynn Schluckebier, Seward; Nancy A. Seim, Lincoln; Ellen Weissinger, Lincoln; Kristin Yates, Lincoln; Linda Hartman, Faculty Representative, Lincoln (2/18/2020)

SENCAP/Dual-Credit Coordinators



East Region

Leah Eischen

Cell: 402-217-7702

leischen@southeast.edu

- Auburn
- Johnson-Brock
- Nebraska City
- Sterling
- Syracuse/Dunbar/Avoca



Central Region

Michael Morris

Cell: 402-418-1256

mmorris@southeast.edu

- Crete
- Dorchester
- Exeter-Milligan
- Friend
- Malcolm
- Milford
- Wilber/Clatonia



Southwest Region

Adam Niederklein

Cell: 402-469-5996

aniederklein@southeast.edu

- Bruning-Davenport
- Fairbury
- Fillmore Central
- Meridian
- Shickley
- Thayer Central
- Tri-County



Northeast Region

Kristi Lawrence

Cell: 402-432-7031

klawrence@southeast.edu

- Contestoga
- Elmwood-Murdock
- Palmyra
- Waverly
- Weeping Water



South Region/Gage County

Fred Helmink

Cell: 402-587-0440

fhelmink@southeast.edu

- Beatrice
- Diller-Odell
- Freeman
- Norris
- Southern



Western Region

Jennifer Soucie Kitt

Cell: 402-643-5698

jsouciekitt@southeast.edu

- Centennial
- Heartland
- McCool Junction
- Seward
- York



Northern Region

Joe Sajevic

Cell: 402-720-3536

jsajevic@southeast.edu

- Ashland-Greenwood
- Bishop-Neumann
- Cedar Bluffs
- Mead
- Raymond Central
- Wahoo
- Yutan



Southeast Region

Chris Hutt

Cell: 402-335-7944

chutt@southeast.edu

- Falls City
- Humboldt-Table Rock-Steinauer
- Johnson County Central
- Lewiston
- Pawnee City

SENCAP/Dual Credit Advantage Office

301 S. 68th St. Place Lincoln, NE 68510

Phone: 402-437-2859

FAX: 402-323-3420

Administrative Director



Erin May

Office: 402-437-2859

Cell: 402-770-1316

emay@southeast.edu

Senior Administrative Director



Dr. Randy Nelson

Office: 402-323-3425

Cell: 402-640-9226

rnelson@southeast.edu

Dean of Extended Learning

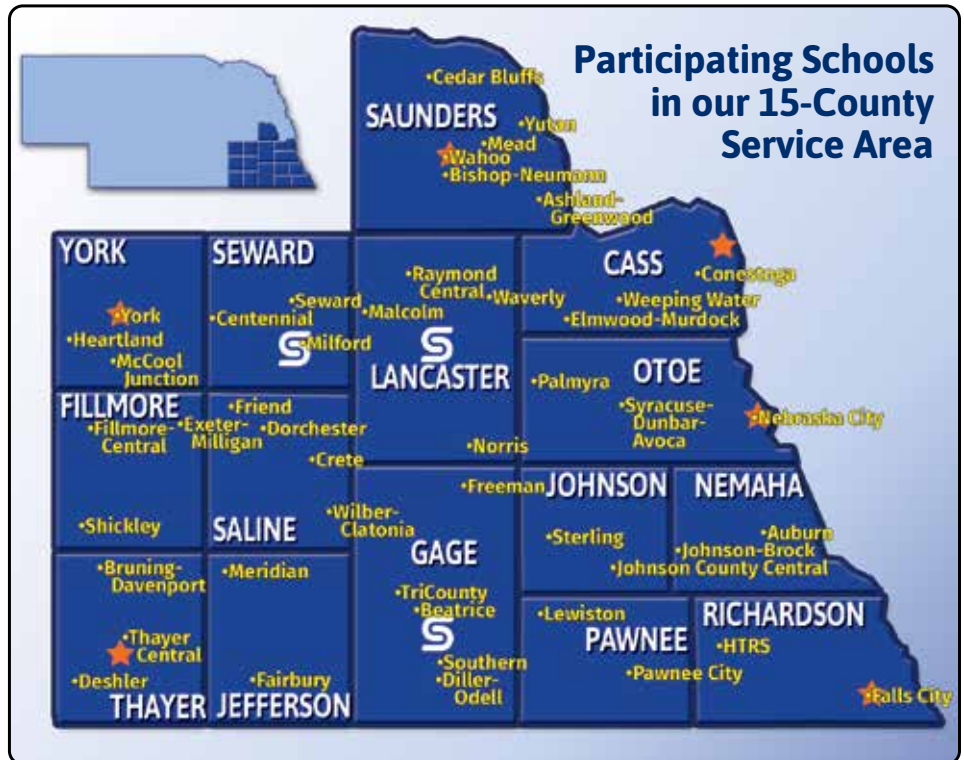


Cinda Konken

Office: 402-437-2625

Cell: 402-219-4319

ckonken@southeast.edu



★ Southeast Community College has campuses in Beatrice, Lincoln and Milford with Learning Centers in Falls City, Hebron, Nebraska City, Plattsmouth, Wahoo, and York.